



MCPC[®]

MONGOLIAN COPPER
PROSPECTING GROUP LLC

MONGOLIAN COPPER PROSPECTING GROUP LLC

Company presentation

COMPANY PRESENTATION

Mongolian Copper Prospecting Group LLC, founded in May 2021, is a 100% Mongolian-owned company. Our goal is to conduct exploration, determining resources, extraction and processing of coal, polymetals, precious metals, Alluvial/placer gold deposit exploration based on exploration and mining licenses. Current exploration activities conducted in following mineral exploration fields:

- "Nukht" (XV-021860) in the Lun soum of Tuv aimag,
- "Oyu Tolgoi" (XV-021886) in the Bayankhairkhan soum of Zavkhan aimag,
- "Undur-Uul" (XV-021784) in the Bayandun soum of Dornod aimag,
- Khukh Chuluut (XV-021833) in the Bornuur soum of Tuv aimag,
- "Altan Mandal" (XV-018239) in the Bugat soum of Gobi-Altai aimag and
- "Bayanzurkh" (XV-021948) in the Tsengel soum of Bayan-Ulgii aimag.

Also, It is planned to mine the "Ikh" mining licensed field (MV-020953) of the "Olongiin Ukhaa" deposit in Dornogovi aimag's Ikhkhet soum.

100%

MONGOLIAN-OWNED COMPANY



PRODUCTS AND SERVICES WE OFFER



Consulting services in the mining industry

1



Geological exploration

2



Mining

3



Mineral processing

4

MISSION

We value safe work practice, while dedicated to creating ecologically and environmentally friendly mineral processing plant that will contribute to long-term sustainable development of Mongolia.



SOCIAL RESPONSIBILITY



Plant and maintain 1000+ trees annually



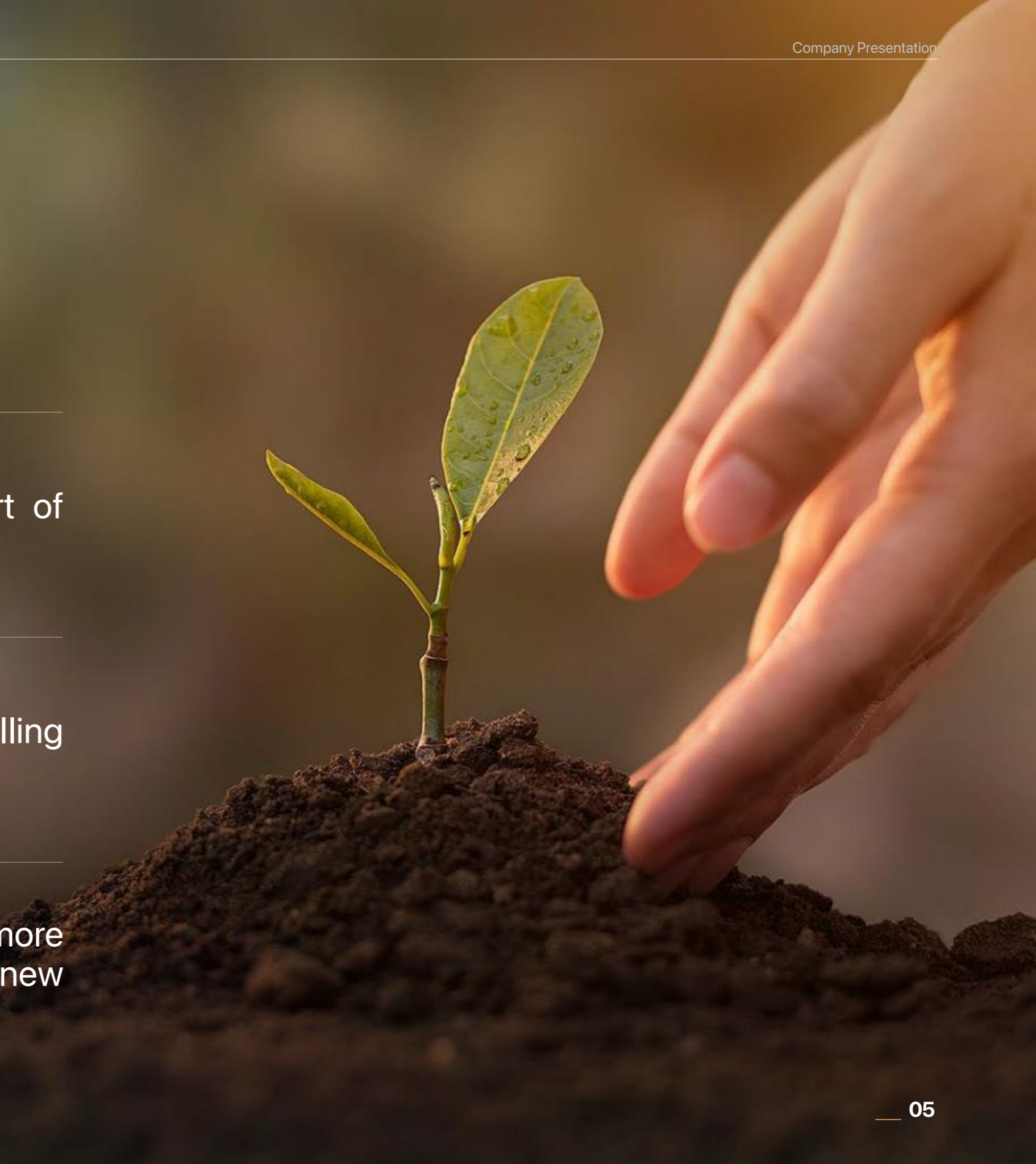
Seek for renewable energy solutions as part of utilization



Provide scholarship to local students in enrolling to foreign and domestic universities.



Establish a water recycling plant to reuse more than 70% of the disposed water, build new watering wells for local community



SOCIAL RESPONSIBILITY



Safety

Its our shared responsibility of both organization and employees to create and maintain healthy and safe work environment.



Stakeholders

By ensuring reciprocal accountability, transparency and engaged participation, we aim to create common shared value for all our stakeholders



Environmental management

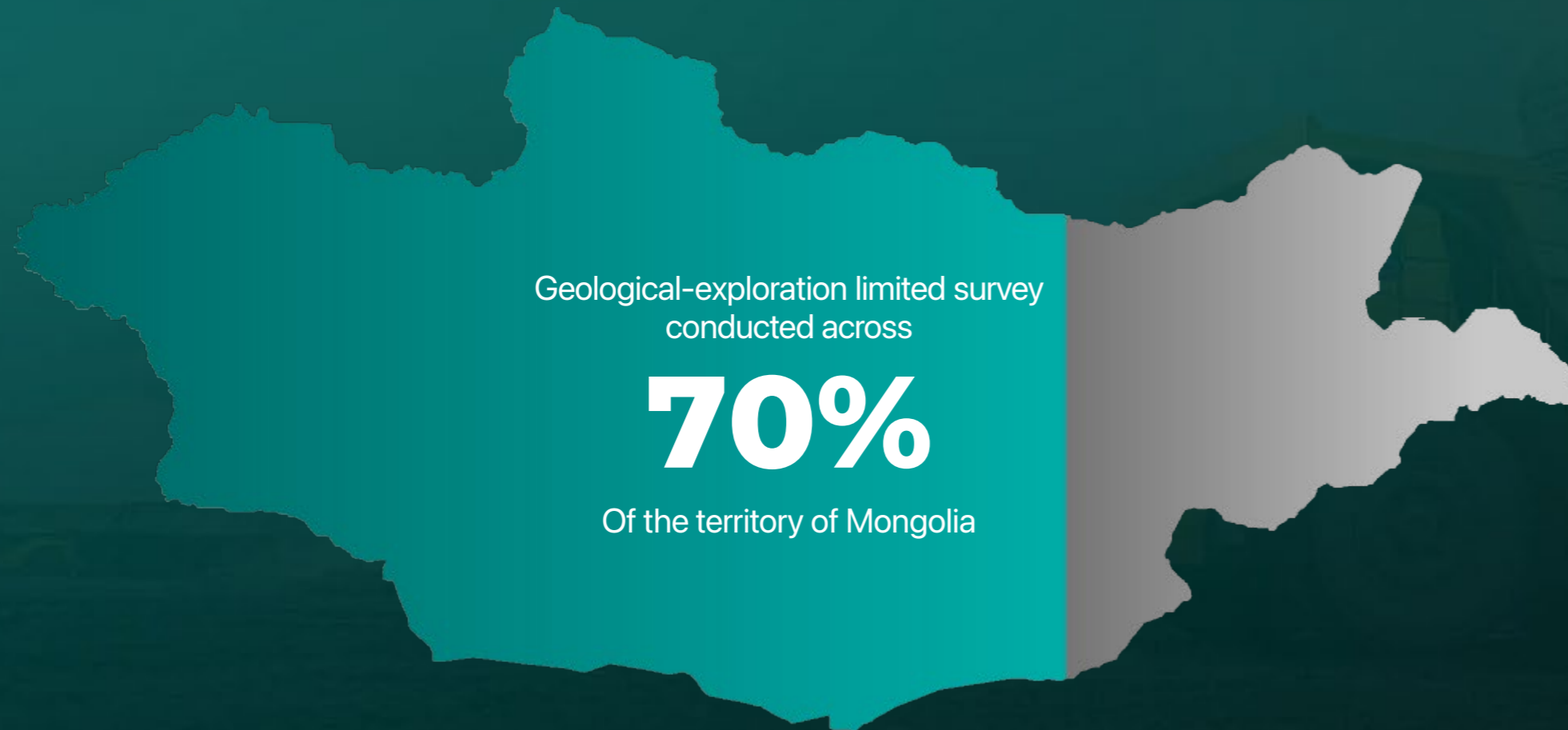
Efforts are taken to prevent adverse environmental impacts prior to project implementation by identifying potential hazards and taking appropriate action.



MONGOLIA-ECONOMY DRIVEN BY MINING

The emerging mining industry

40,000+
Mining professionals



Regulatory, legal and policy support

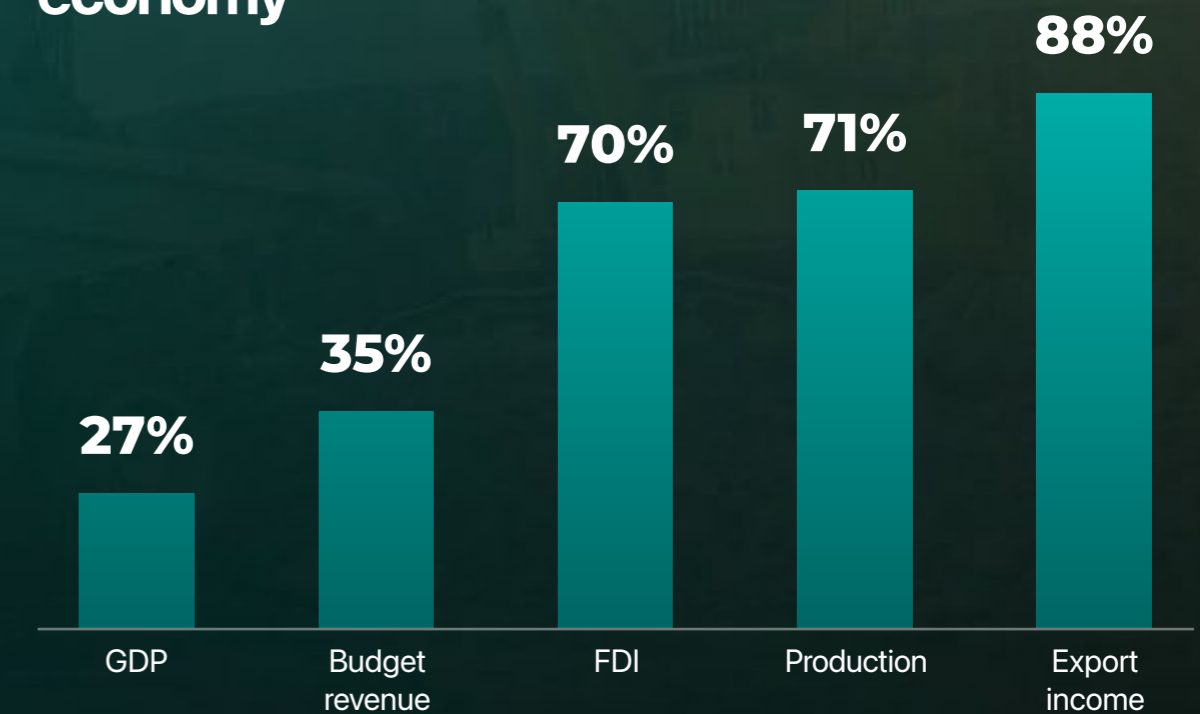
5%

Royalty from exploitation of gold reserves

25%

Corporate income tax

Mining industry contribution to the economy



MONGOLIA-ECONOMY DRIVEN BY MINING

A developing democracy landlocked between Russia and China

Low population density

18

18th largest country in the world by territory

Mongolia's

3M

Population
(2 persons per square meter)

GDP growth

2020

6.3%

2021

8.8%

30+

Years of democratic election

98%

Of total population is literate

65%

Of total population aged below 35 years old (relatively young nation)

RELATED COMPANIES



Intercontinental Minerals LLC

The company, created in 2021, has main activities in the mining and mining equipment trade. Currently the company is conducting exploration programs in the "Undur Uul" (XV-021784) field in Bayandun soum of Dornod aimag and the "Bayanzurkh" (XV-021948) field in Tsengel soum of Bayan-Ulgii aimag.

Executing project
UNDUR UUL



Taliin Nomt LLC

The company, created in 2021, has main activities in the mining and mining equipment trade. Currently the company is conducting exploration program in the "Khukh Chuluut" (XV-021833) field in Bornuur soum of Tuv aimag.

Executing project
KHUKH CHULUUT



Uyanga Ongi LLC

Uyanga Ongi LLC was founded in 2015, with main activities in the mining and tourism. Currently the company is performing mining operation in the "Ikh" (XV-020953) field of the "Olongiin Ukhaa" brown coal deposit in the Dornogovi aimag's Ikhkhet soum.

Executing project
OLONGIIN UKHAA



Ikh Ochir Mandal Resource Prospecting LLC

A company established in 2012, with main activities in the mining and foreign trade. Currently the company is conducting exploration program in the "Altan Mandal" (XV-018239) field in Bugat soum of Govi-Altai aimag.

Executing project
ALTAN MANDAL

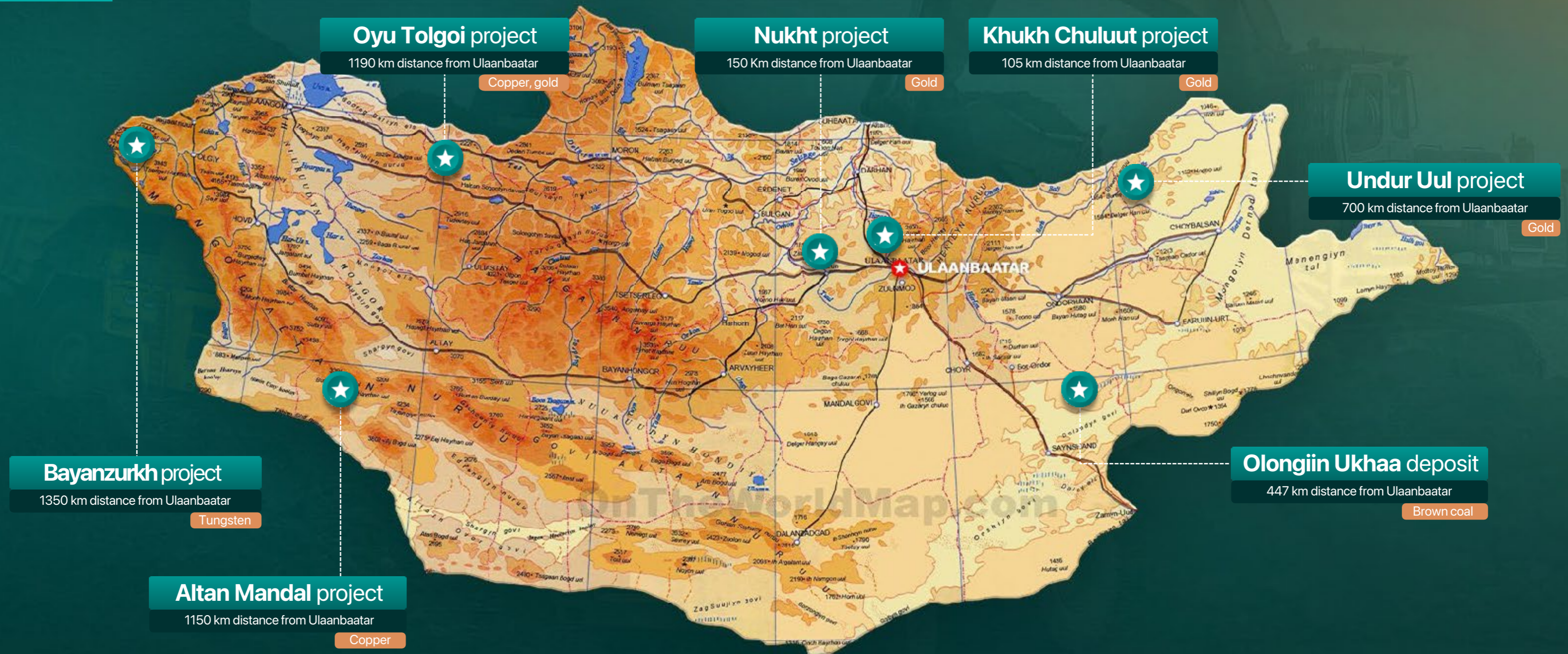


Zuchi Resources LLC

The company, created in 2021, has main activities in the mining and mining equipment trade. Currently the company is conducting exploration programs in the "Bayanzurkh" (XV-021948) field in Tsengel soum of Bayan-Ulgii aimag.

Executing project
BAYANZURKH

PROJECT LOCATIONS IMPLEMENTED BY THE MONGOLIAN COPPER PROSPECTING GROUP AND ITS RELATED COMPANIES



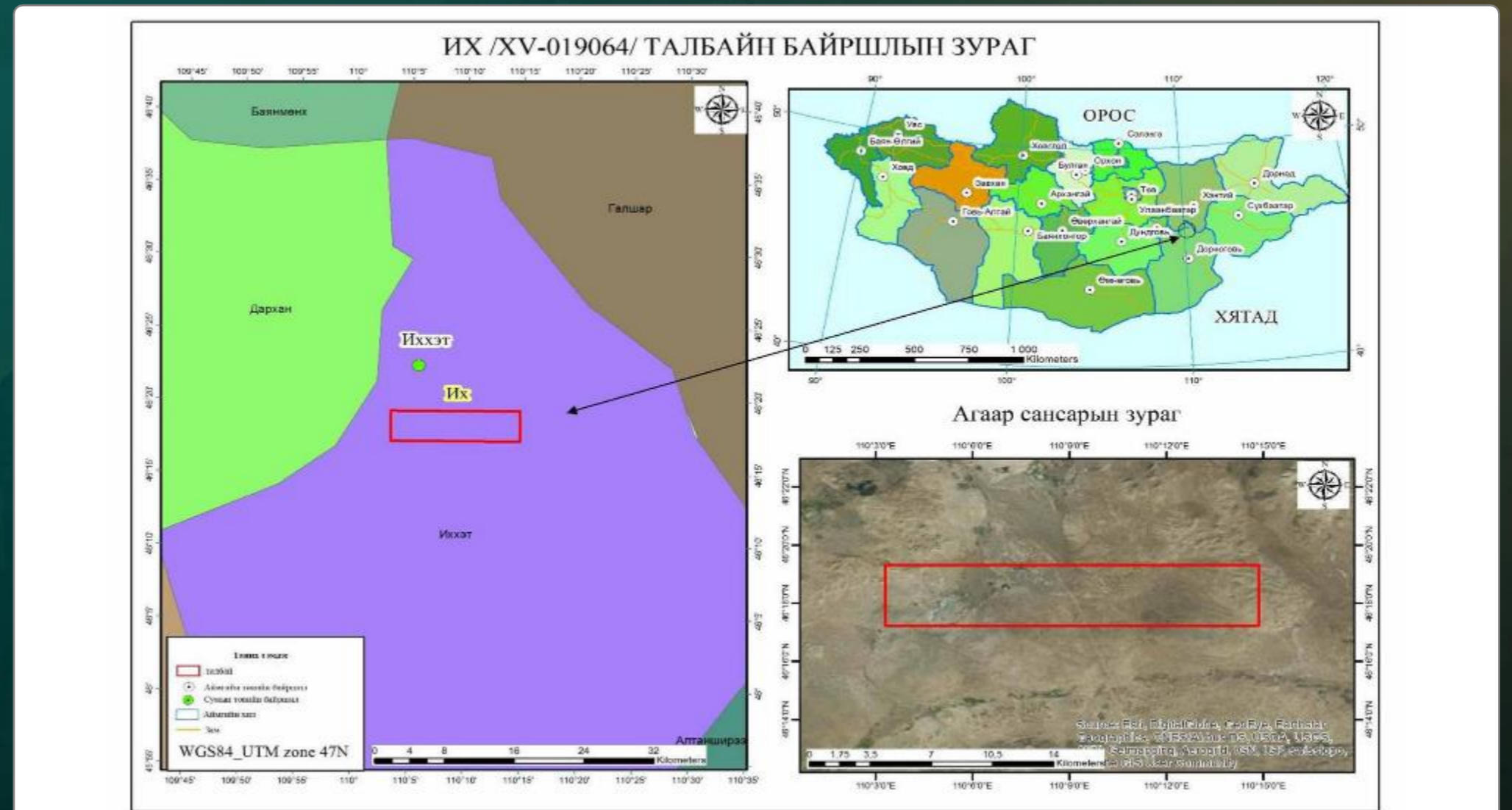
OLONGIIN UKHAA DEPOSIT

Owner:
Related companies

The "Ikh" (XV-019064) 5727.97 ha exploration license was converted on October 17, 2017 by the decision No. 617 of the Head of the Cadaster Department of the Mineral Resources and Petroleum Authority into the mining license No. MV-020953 with 860.5 ha area. The "Ikh" brown coal deposit locates 447 km from Ulaanbaatar, 10 km west of the Ikhkhet soum and 150 km from Dornogovi aimag center.

PROJECT INFORMATION

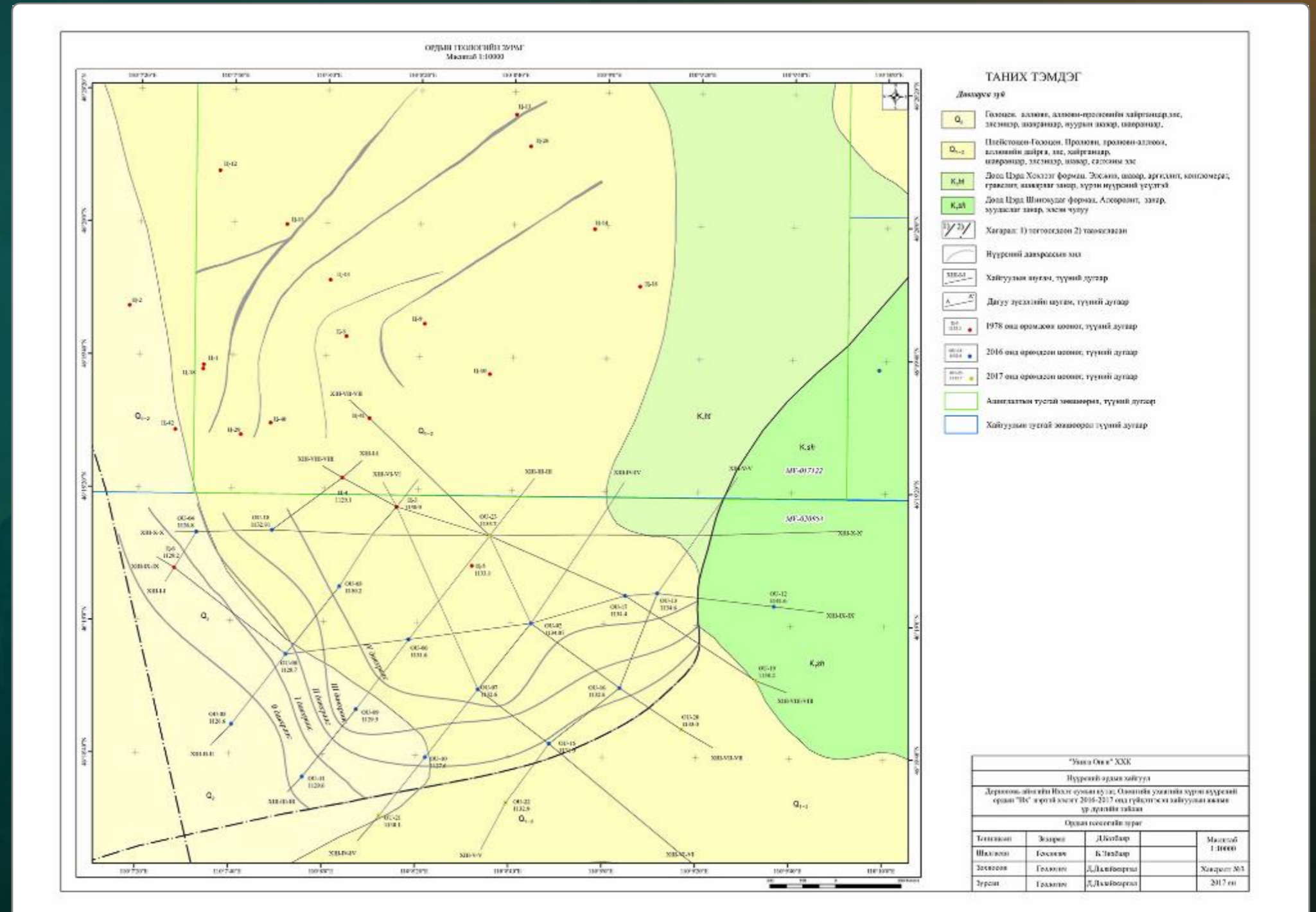
License No.:	MV-020953
Name:	Olongiin Ukhaa
Type:	Exploration license
Status:	4t year
Owner:	Uyanga Ongi LLC
Area /ha/:	860.5



Olongiin Ukhaa brown coal deposit location map

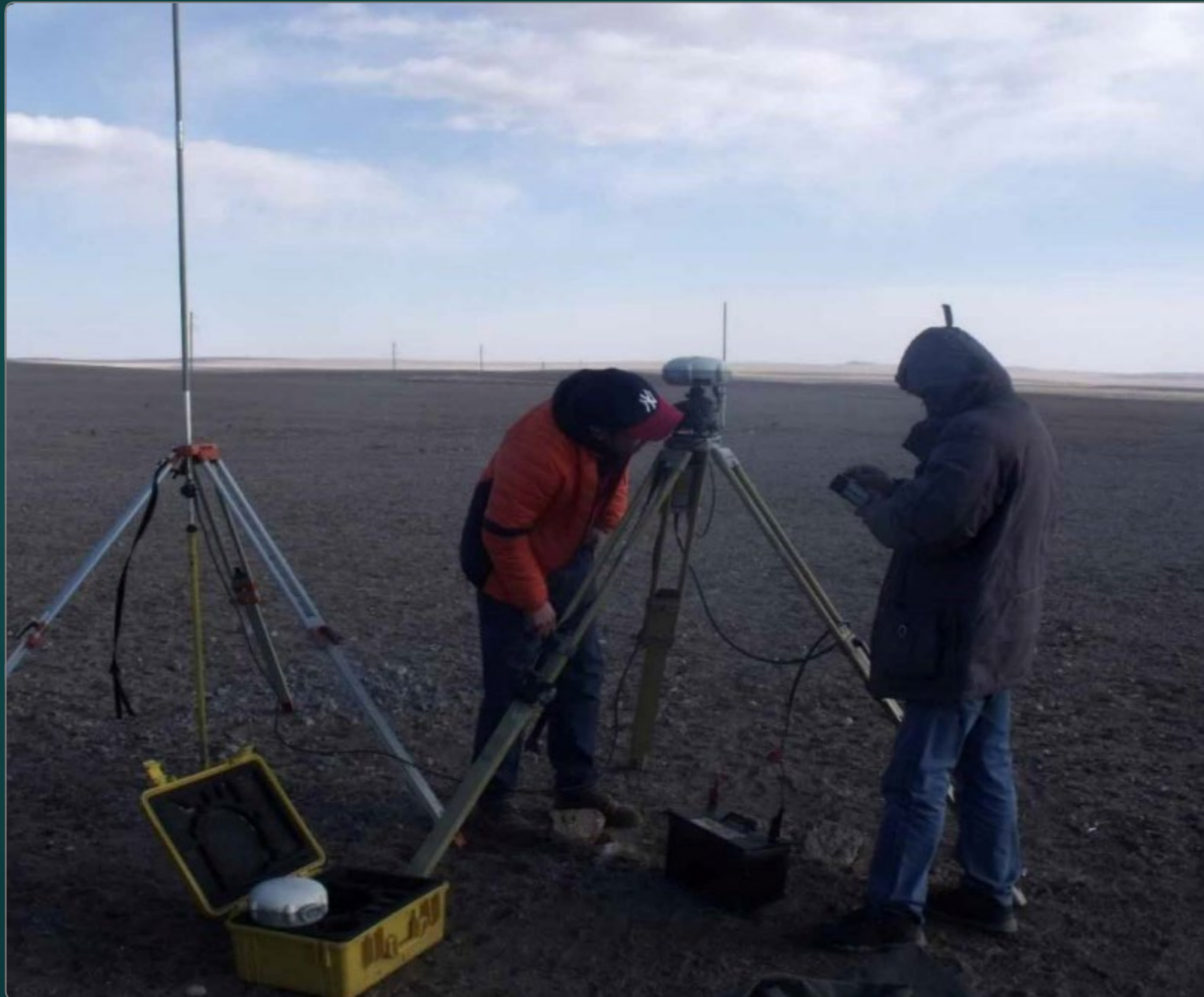
WORKS CONDUCTED IN 2016-2017

- ▶ Survey route covered 12 km
- ▶ Magnetic survey 575 km
- ▶ Drilling of 2148 m
- ▶ Topographic survey covered 1600 ha
- ▶ 23 boreholes
- ▶ Borehole logging at 1593.5 m of drilling
- ▶ 220 samples submitted to a laboratory analysis



Olongiin Ukhaa coal deposit geological map

WORKS CONDUCTED IN 2016-2017



Topographic survey conducted at 1600 ha



**Olongiin Ukhaa brown coal deposit
OU-0010 borehole logging**

WORKS CONDUCTED IN 2016-2017

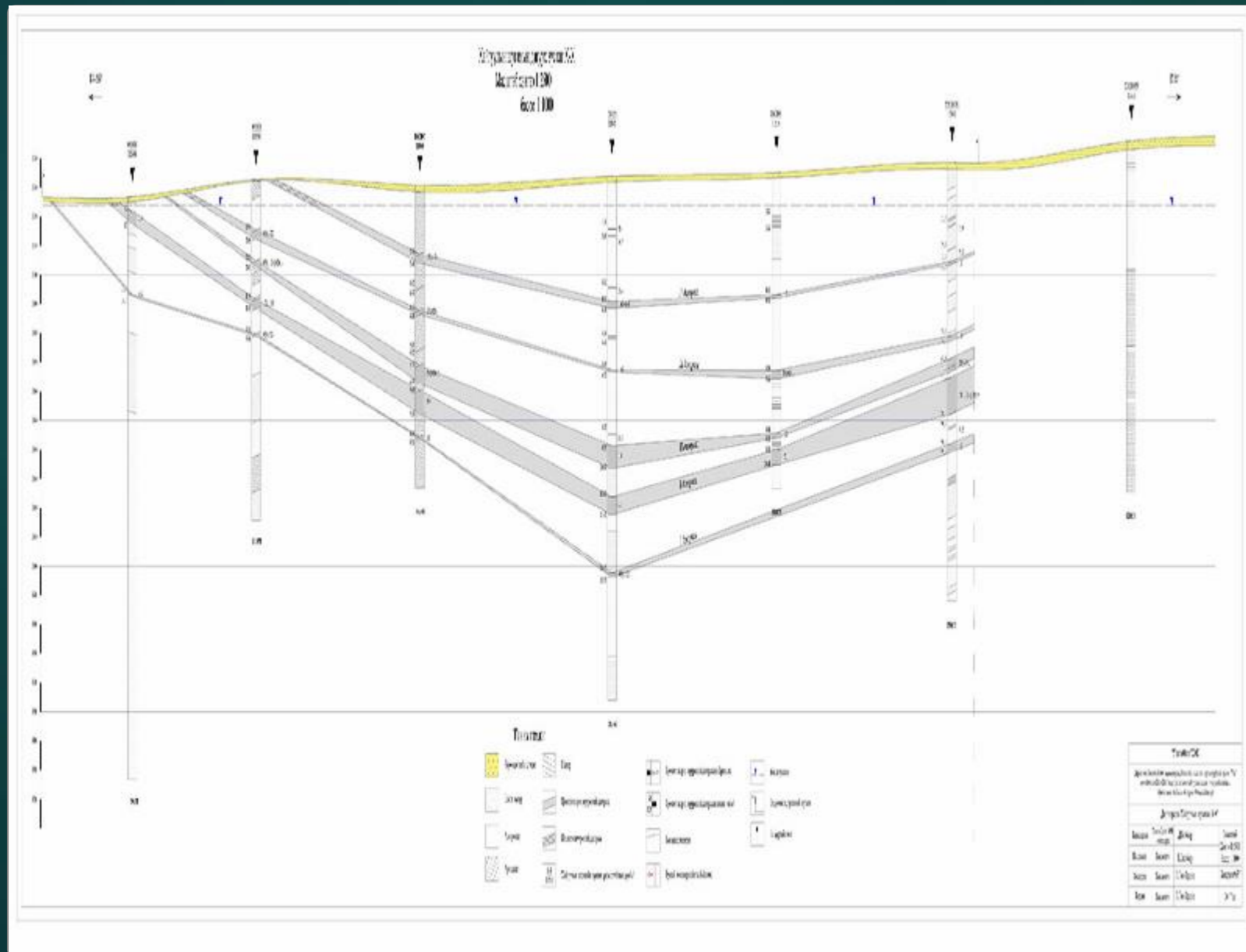


Olongiin Ukhaa brown coal deposit's OU-0017 borehole drill core at 63.5-71.0 m

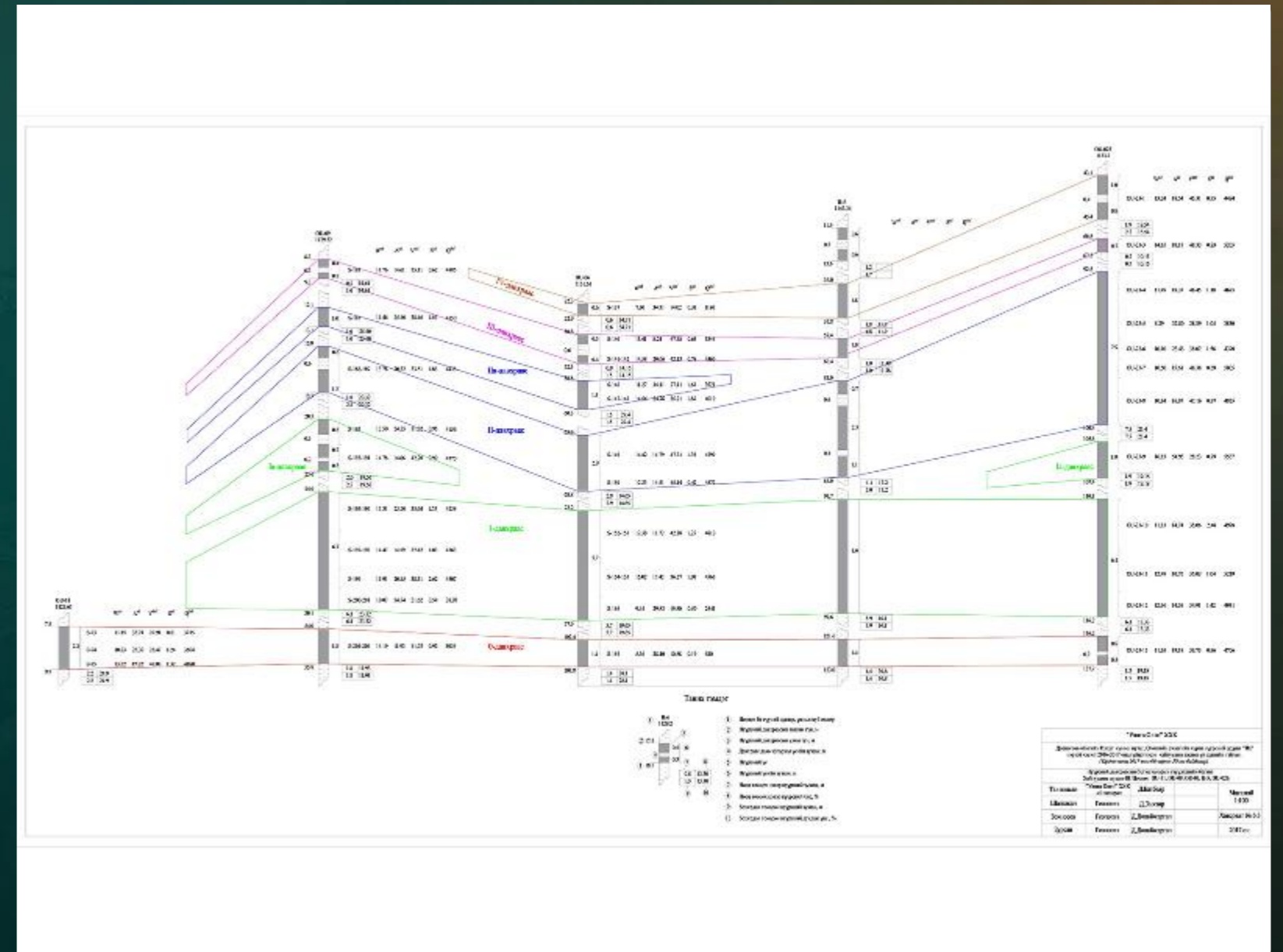
#	Laboratory test parameter	Sample quantity	Laboratory tested
1	Coal proximate test	162	"ALS Group" laboratory
2	Coal petrography	20	National University of Mongolia, Laboratory /Dr. Jargal L./
3	Coal crucible swelling index	9	Central Geological Laboratory
4	Watertest package/borehole, lake, well/	3	Central Geological Laboratory
5	Rock geotechnical analysis	6	BAC, Concrete Aggregate, Construction Physics Laboratory
6	Coal ash fusion temperature analysis	3	"ALS Group" laboratory
7	Trace elements in ash /13- elements/	3	"ALS Group" laboratory
8	Coal ash chemical composition analysis	3	"ALS Group" laboratory
9	Radioactive isotope analysis	6	Nuclear physics research central laboratory
10	Bulk density, specific gravity test	1	Central Geological Laboratory
11	Vitrinity reflectance analysis	4	Central Geological Laboratory

"Table of samples submitted to laboratories in 2016-2017, as a result of exploration survey at "Ikh" site of the Olongiin Ukhaa lignite deposit"

OLONGIIN UKHAA BROWN COAL DEPOSIT RESERVE

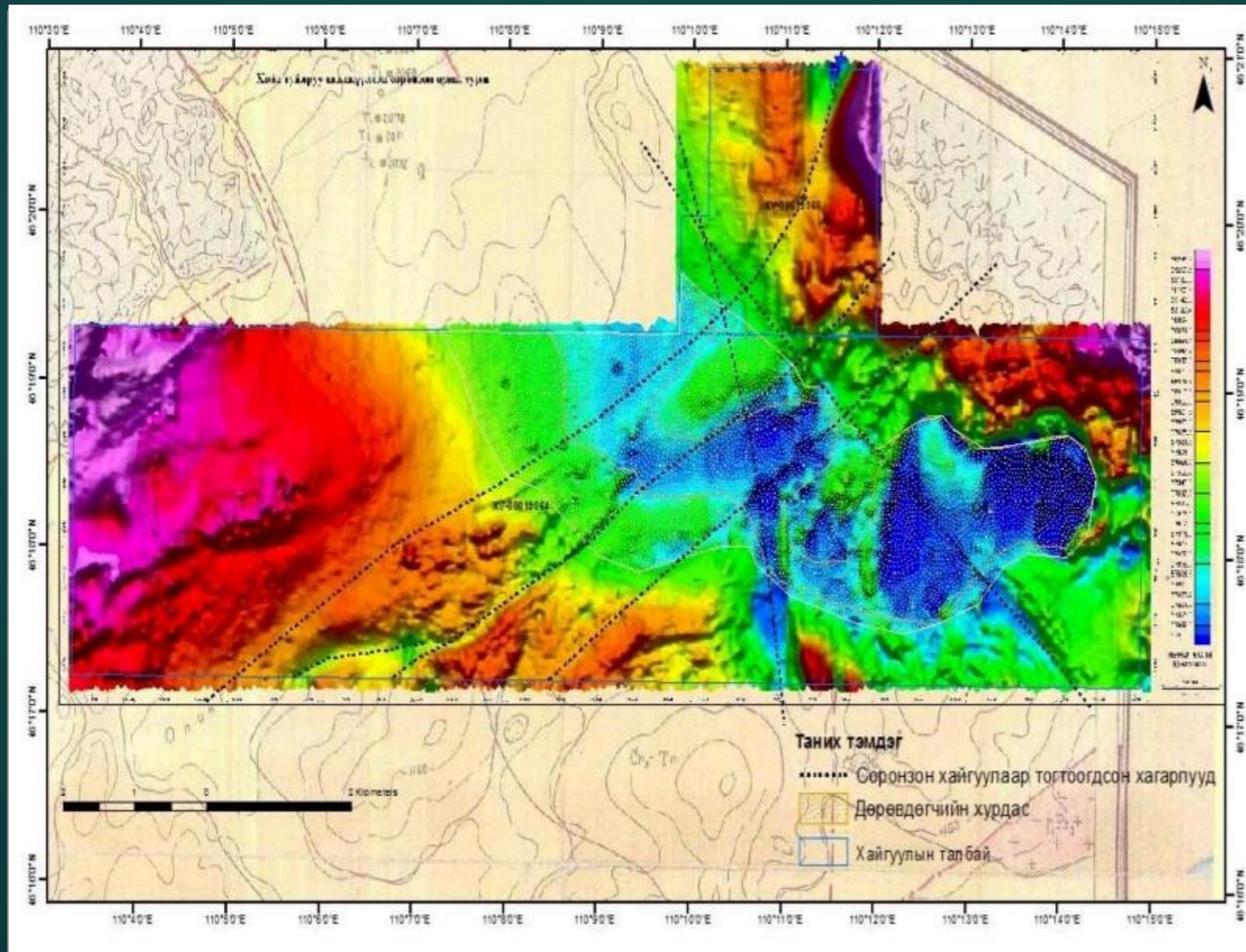


Olongiin Ukhaa brown coal deposit seams, exploration line X-X'

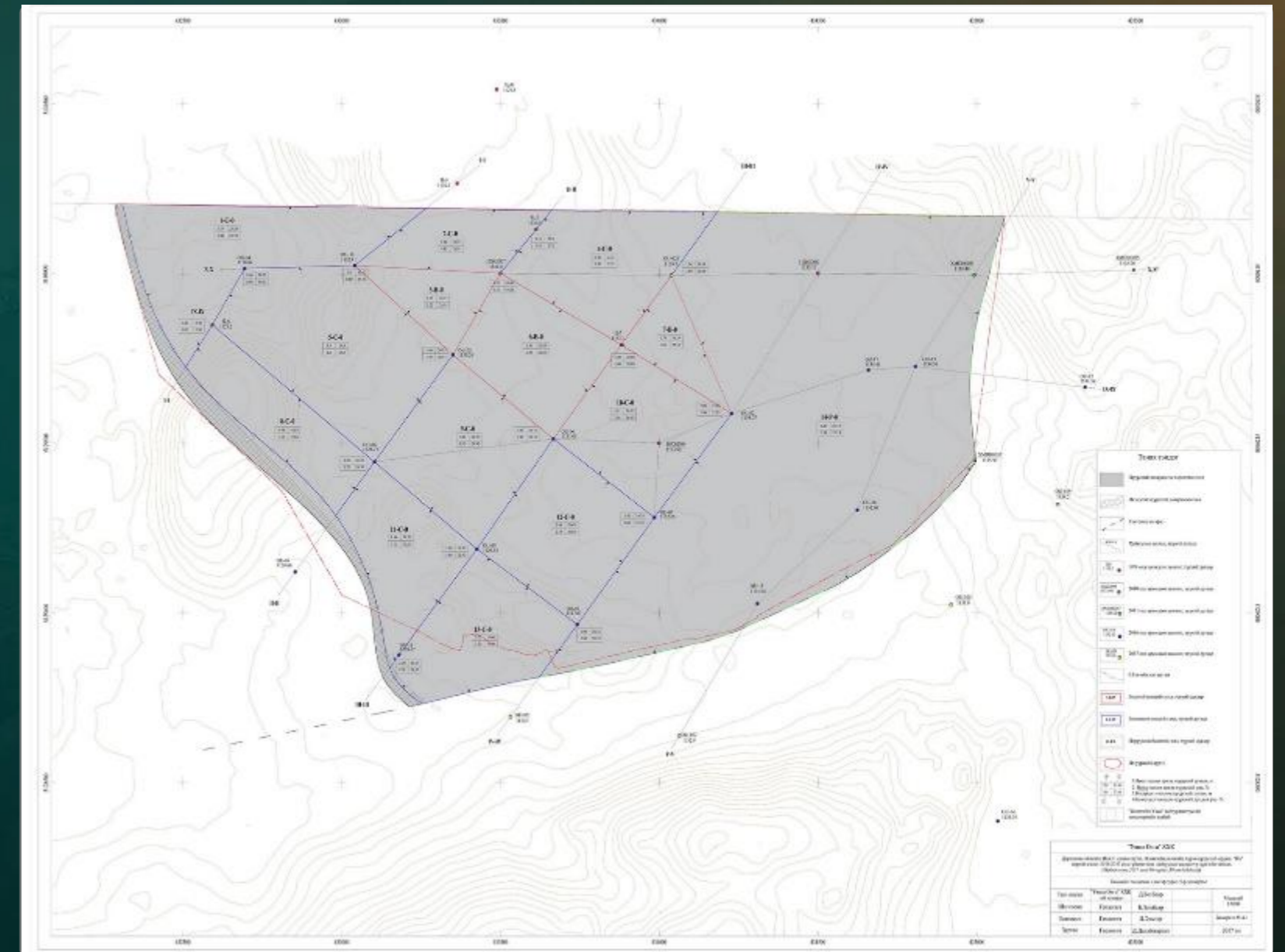


Olongiin Ukhaa brown coal deposit's coal seam structure and quality indicator graph, exploration line-III /Borehole OU-11, OU-09, OU-06, Ts-5, OU-23/

OLONGIIN UKHAA BROWN COAL DEPOSIT RESERVE

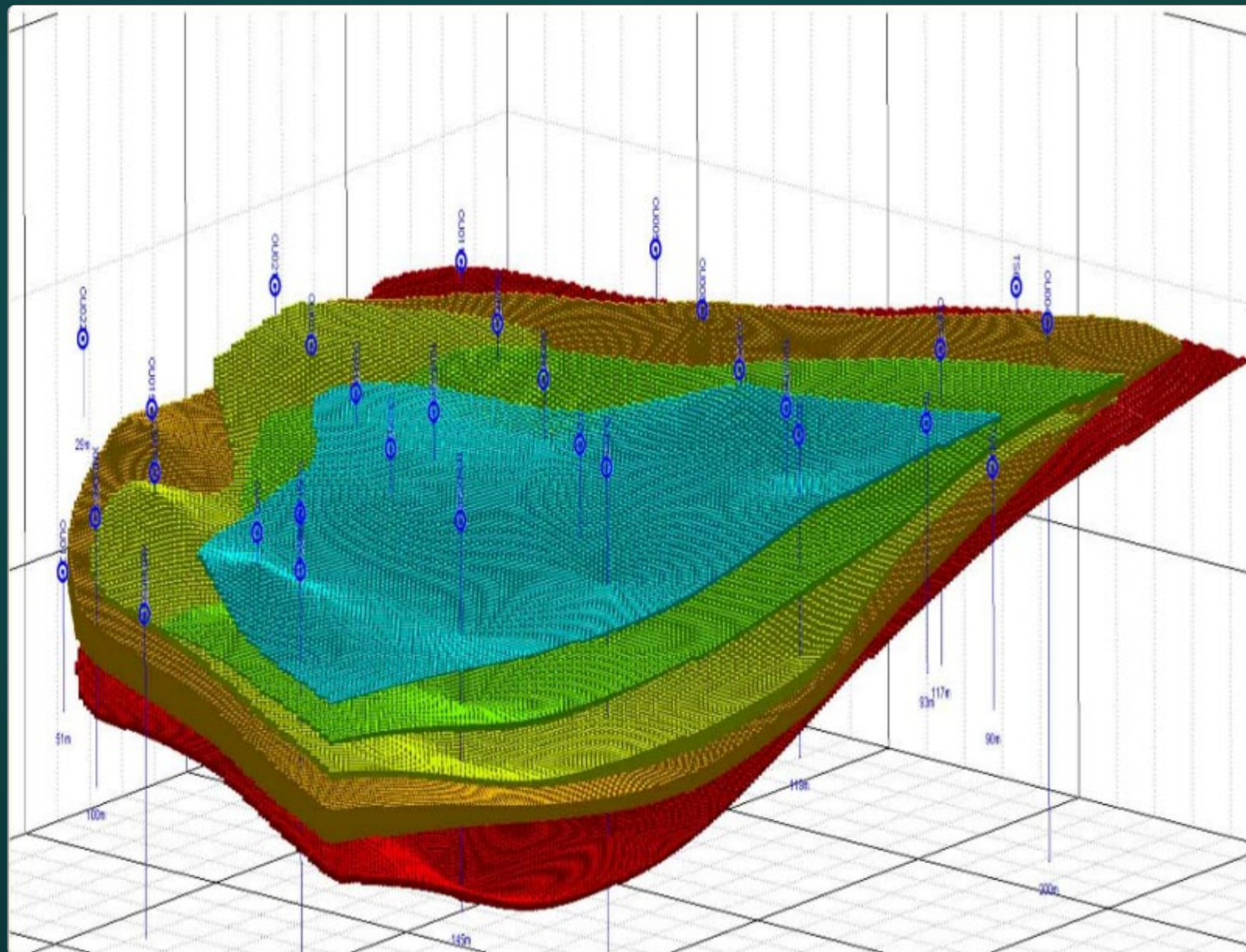


Magnetic survey result map conducted at the Olongiin Ukhaa brown coal deposit's "Ikh" site.



Olongiin Ukhaa brown coal deposit resource estimation background map, '0' coal seam

OLONGIIN UKHAA BROWN COAL DEPOSIT RESERVE



Block model of the Olongiin Ukhaa brown coal deposit's coal seam view from southeast /Surpak 6.3.2/

#	Coal type, category	Reserve block	Thickness, m		Density, t/m3		Coal reserve '000/t	
			Net	Gross	Net	Gross	Net	Gross
Deposit Value	Б-2	B	3.38	3.68	1.30	1.31	10659.9	11764.9
	ӨИ	C			1.30	1.31	1296.8	1508.2
	Б-2		3.14	3.57	1.30	1.31	29093.4	29625.3
	ӨИ	B+C			1.30	1.31	1296.8	1508.2
	Б-2		3.26	3.62	1.30	1.31	39753.3	41390.2
	Total				1.30	1.31	41050.1	42898.3
Wealth	P		0.00	0.00	1.30	1.31	5659.3	6057.9

Table of total reserve of "Ikh" site of the Olongiin Ukhaa brown coal deposit /reserve calculated by block method/.

ALTAN MANDAL PROJECT

Owner:
Related companies

The "Altan Mandal" (XV-018239) project with a 3979.03 ha exploration area is located in the Bugat soum of the Govi-Altai aimag, 1260 km west of Ulaanbaatar, 223 km west of the Govi-Altai aimag center, and 7 km west of the Bugat soum center. Located 85 km northeast of Burgastai port, close to the Chinese border with well-developed infrastructure, and 120 kilometers south of the main road connecting the western aimags.

PROJECT INFORMATION

License No.:	XV-018239
Name:	Altan mandal
Type:	Exploration license
Status:	6 th year
Owner:	Ikh Ochir Mandal Resource Prospecting LLC
Area /ha/:	3979.03



The complex block contains several elements:

- Top Left:** A small map of Mongolia with the Govi-Altai aimag highlighted in red.
- Top Right:** A photograph of snow-capped mountains under a blue sky.
- Center:** A detailed map of the Govi-Altai aimag showing its soums (districts). A red star marks the location of the Altan Mandal project in the Bugat soum. The map includes a legend with symbols for:
 - ★ Аймгийн төв (Aimags capital)
 - Сумын төв (Soum capital)
 - ▭ Аймгийн хил (Aimag border)
 - ▭ Сумын хил (Soum border)
 - ▭ Нуур (Lake)
 - ▭ Заг (Forest)
 - Улсын хил (National border)
 - Гол (River)
 - Зам (Road)
- Bottom Right:** A photograph of a vast, flat landscape under a cloudy sky.

Altan Mandal exploration site location map, Scale 1:1000000

WORKS CONDUCTED IN 2016-2021



Collected 40 rock samples from the exploration site



Rock sample #589, Cu-0.03, collected from the southwest surface of the exploration site



Exploration mapping at 49.6 km

GEOCHEMICAL SAMPLING IN 2020

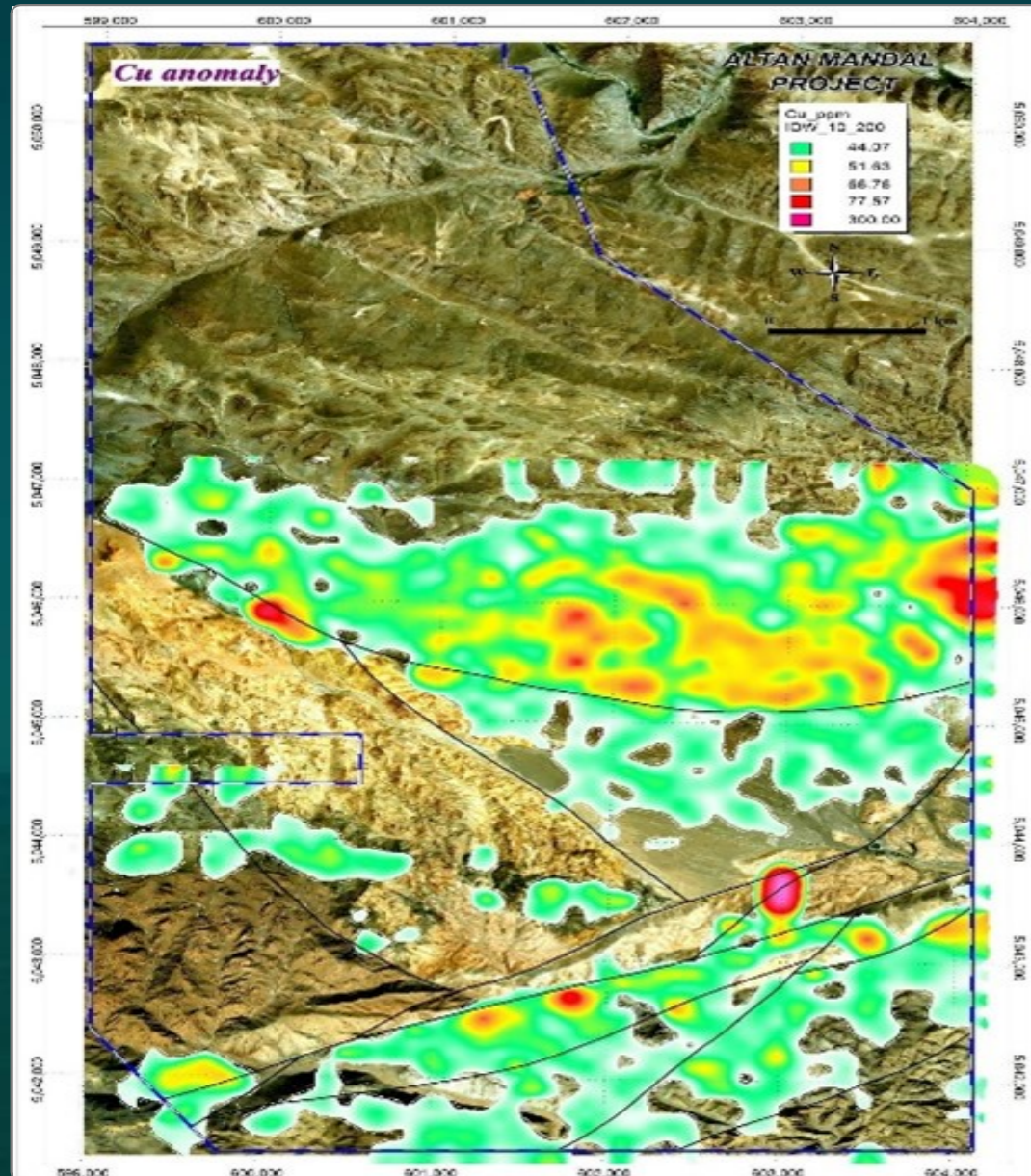


Altan Mandal exploration site geochemical sampling in 2020

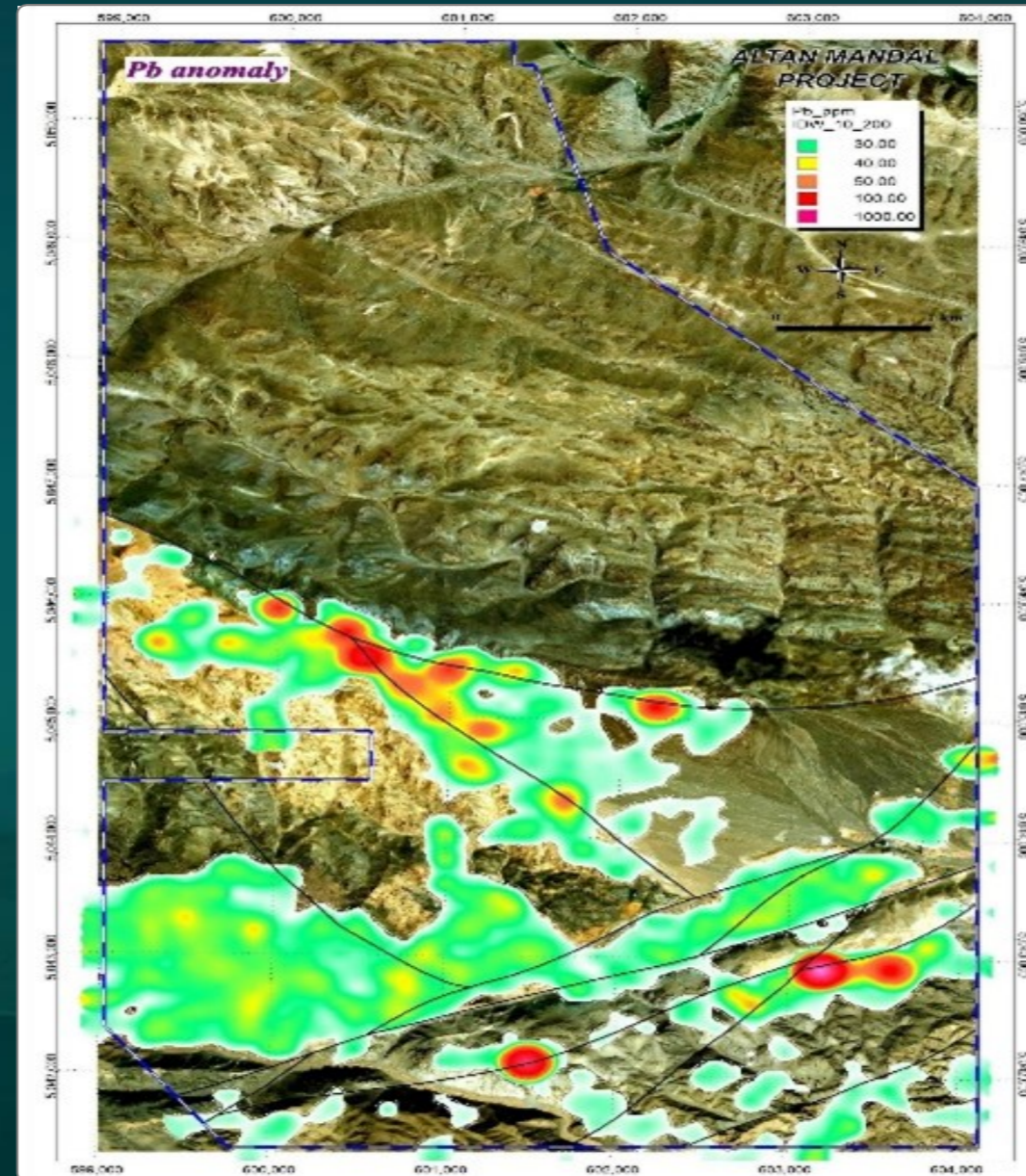


Delta-XRF spectrometer used during geochemical sampling at Altan Mandal exploration site

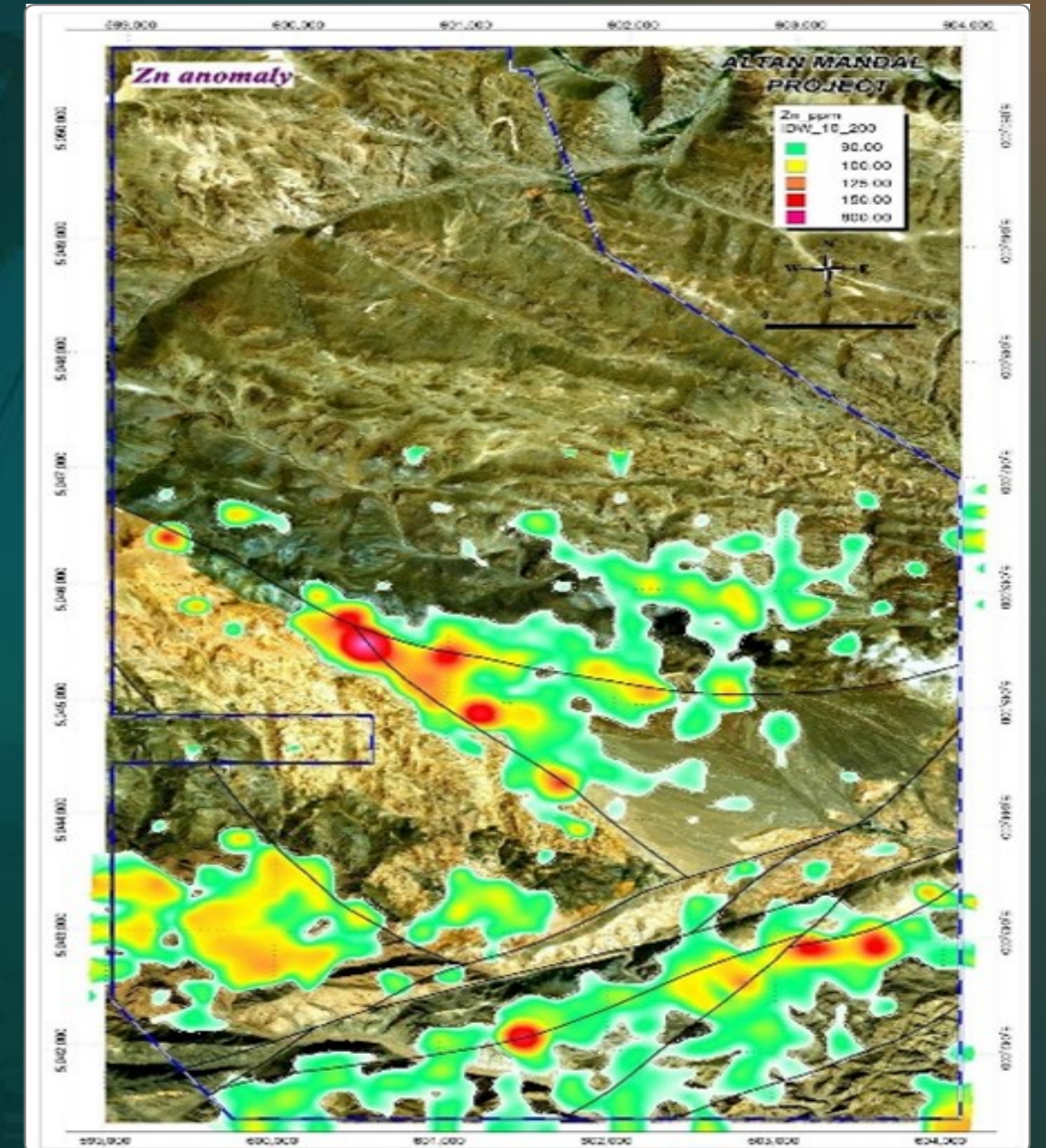
2020 GEOCHEMICAL WORK RESULT



Geochemical soil sampling result - Cu



Altan Mandal exploration site 2020 geochemical sampling result distribution - Pb



Geochemical soil sampling result - Zn

KHUKH CHULUUT PROJECT

Owner:
Related companies

The Khukh Chuluut (XV-021833) project spans 161.66 ha in Tuv aimag's Bornuur soum, 105 km from Ulaanbaatar and 20 km from the aimag center. It's 25 km southeast of the Boroo gold mine, 35 km west of the Zuun Mod gold deposit, and 7 km east of the Boroo river.

ТӨСЛИЙН МЭДЭЭЛЭЛ

License No.: XV-021833

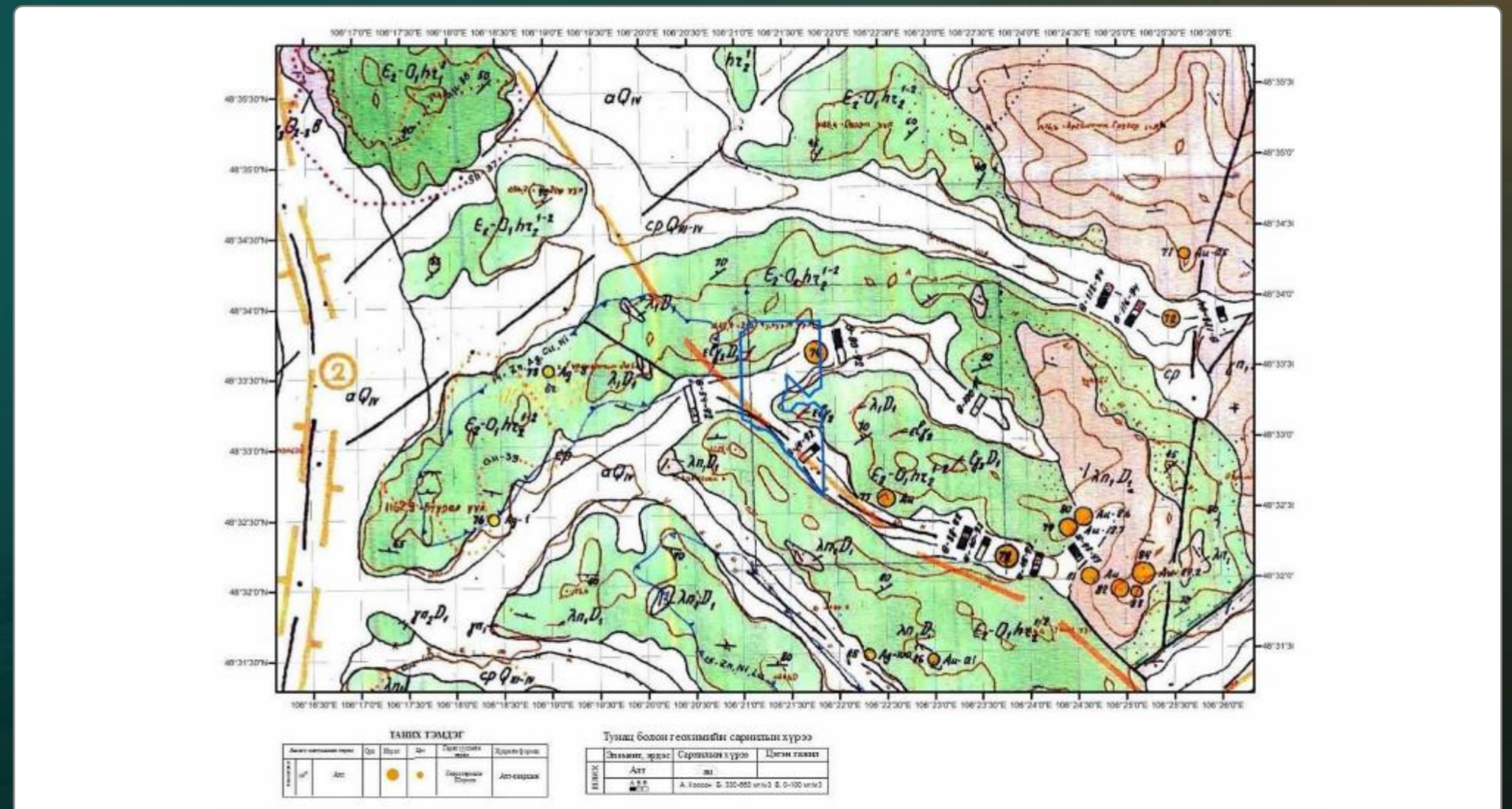
Name: Khukh Chuluut

Type: Exploration license

Status: 1st year

Owner: Taliin Nomt LLC

Area /ha/: 161.66



Khukh Chuluut exploration site geological-mineral map

WORKS CONDUCTED



**Khukh Chuluut exploration site
southeast side**



**Khukh Chuluut exploration site
northeast side**

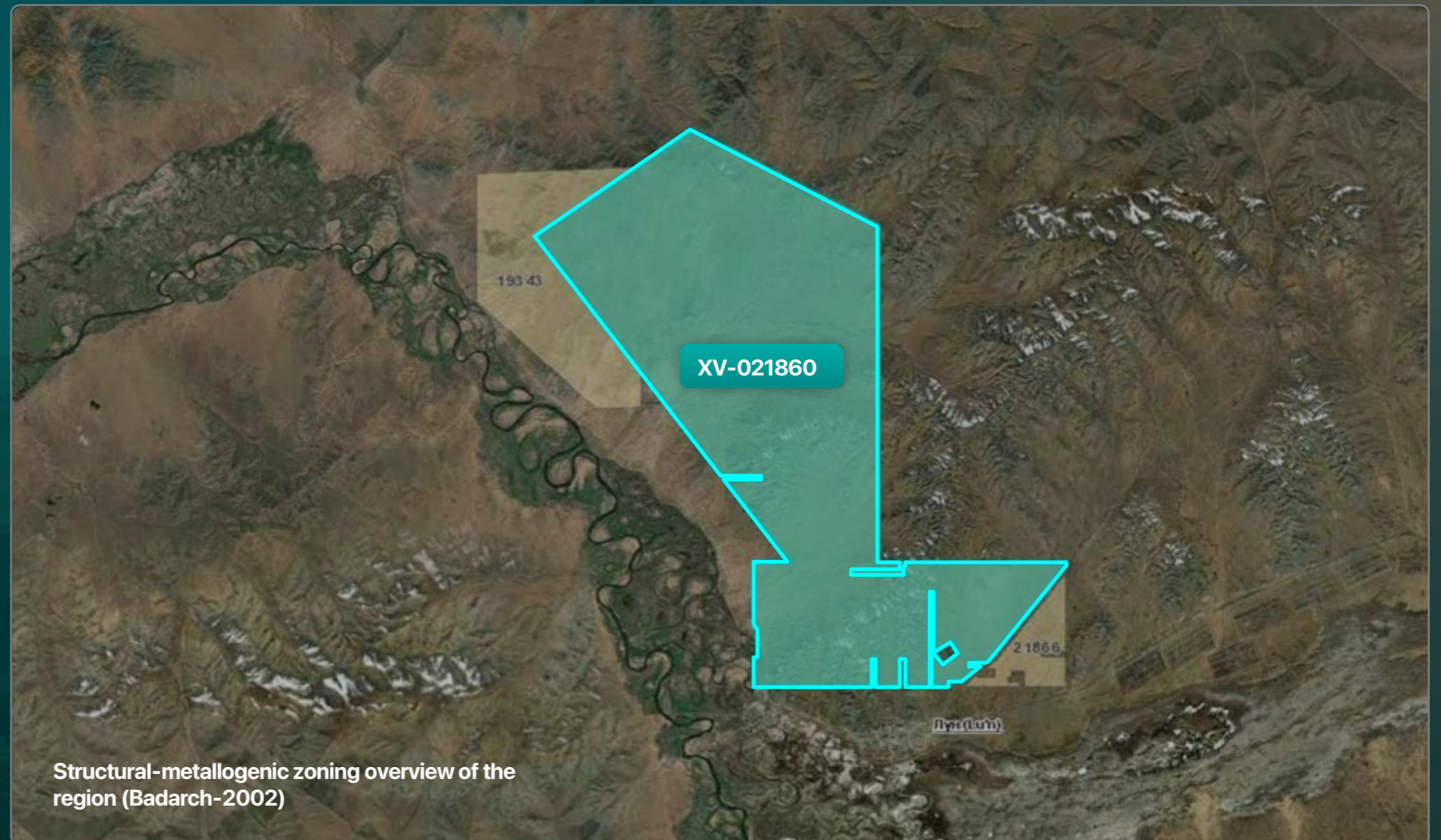
NUKHT PROJECT

Owner:
Mongolian Copper Prospecting Group

Located in 150 km from Ulaanbaatar, the Nukht (XV-021860) project spans 5,192.01 ha in the Lun and Ugtaaltsaidam soums in Tuv aimag. The closest located project to Ulaanbaatar, with well developed infrastructures.

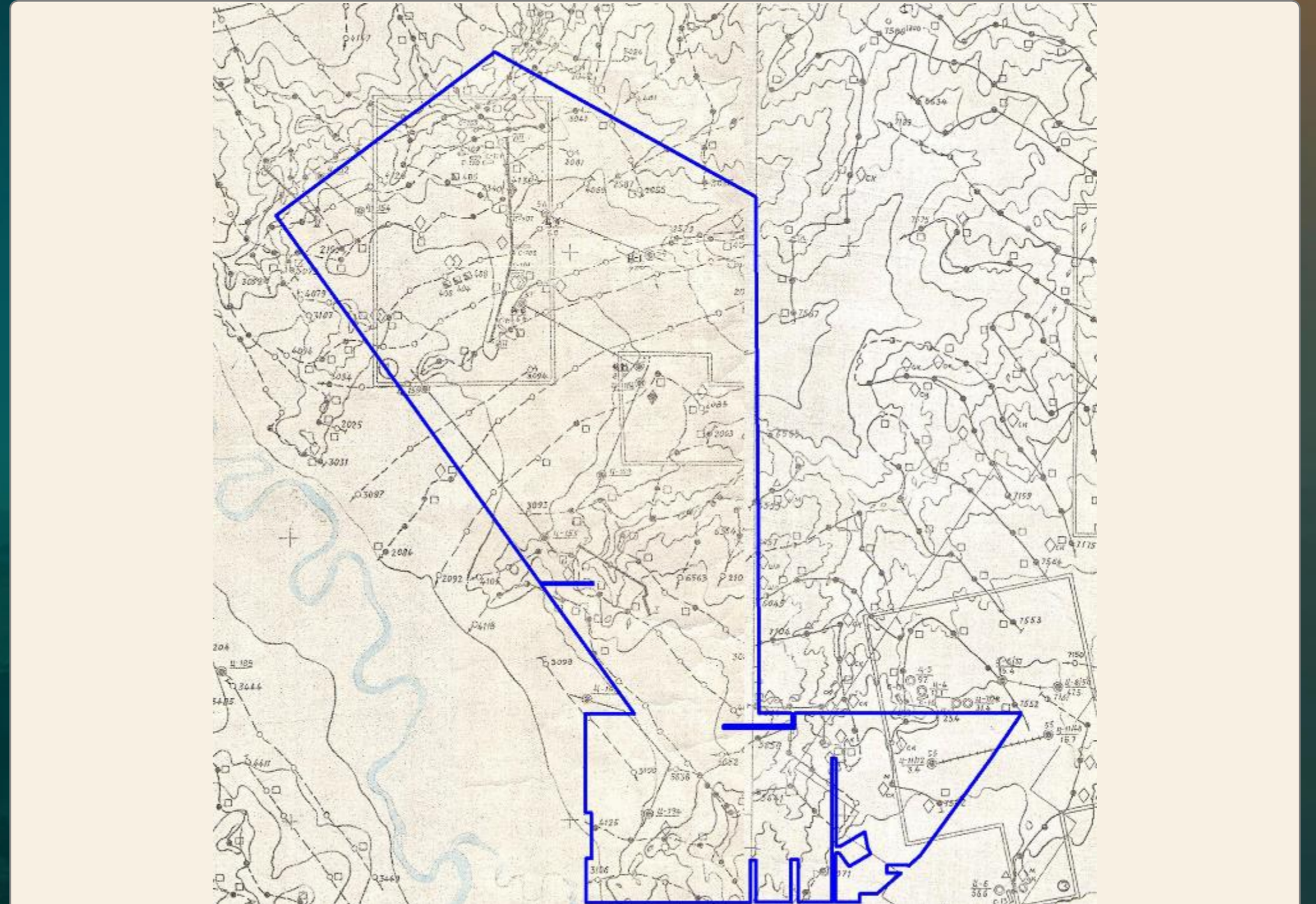
PROJECT INFORMATION

License No.:	XV-021860
Name:	Nukht
Type:	Exploration license
Status:	1 st year
Owner:	Mongolian Copper Prospecting Group
Area /ha/:	5192.01



WORKS CONDUCTED IN 1992

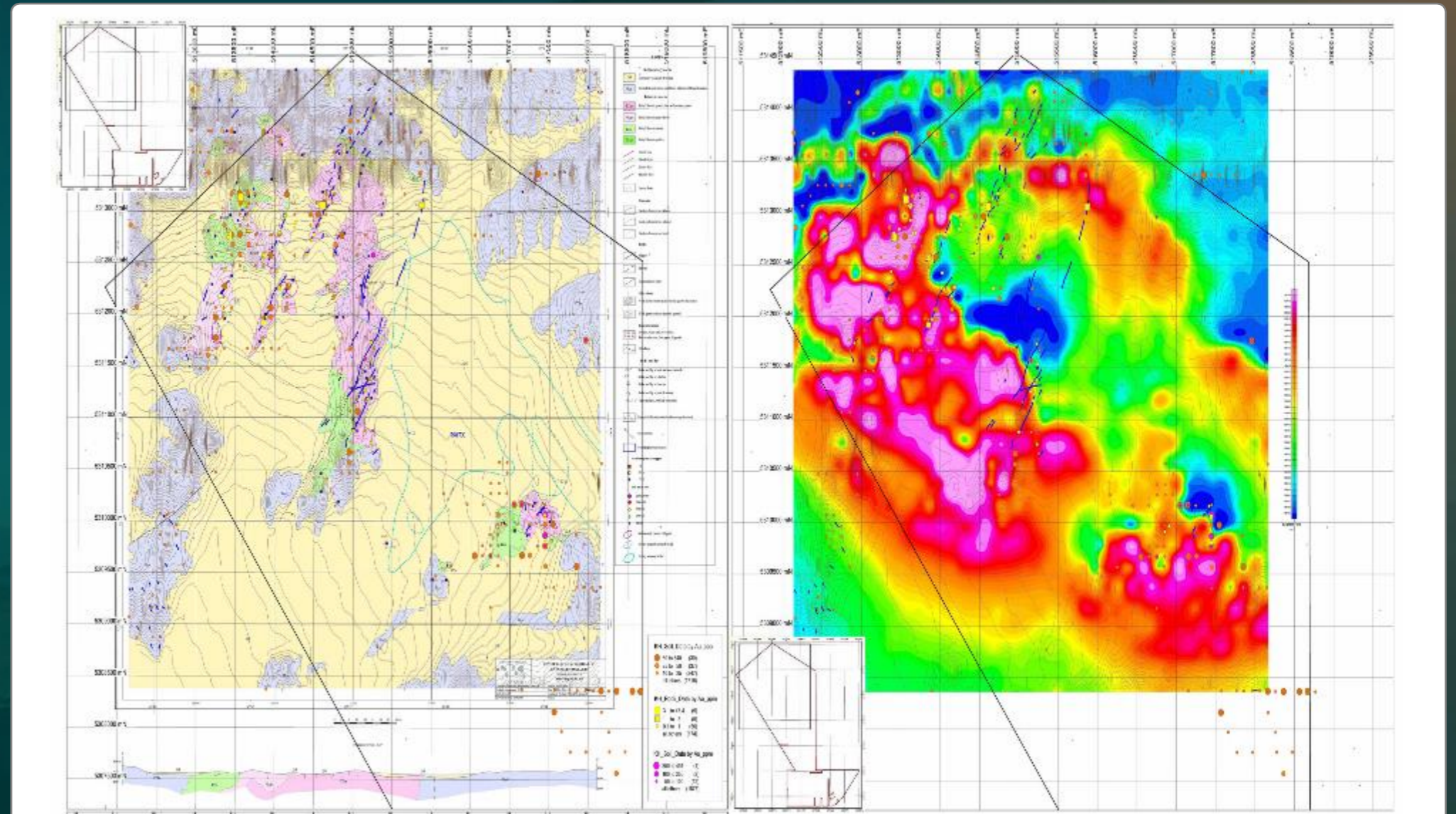
- ▶ The survey route covered 239.3 km, with 600 ha divided into three sections (Gyalalzakh, Maan't, Berst), in which comprehensive exploration mapping conducted at a scale of 1:5000
- ▶ 134 recon samples collected and submitted to the laboratory
- ▶ 161.5m³ channel excavation in Gyalalzakh area in 1992
- ▶ Drilling of 600 m



Nukht exploration site documentation map, 1992

WORKS BY CENTERRA GOLD MONGOLIA LLC IN 2005-2006

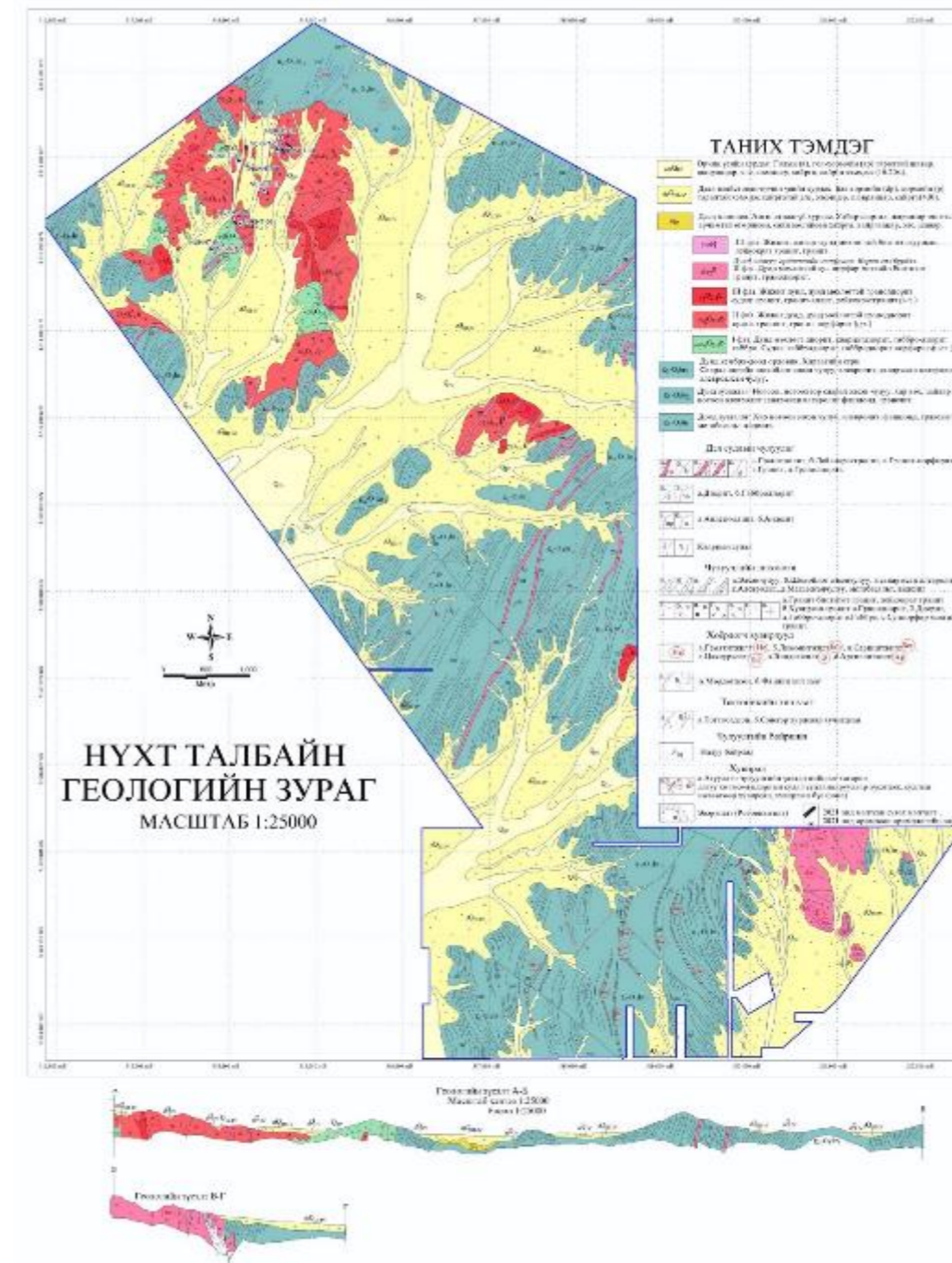
- ▶ Geo-exploration mapping work across 600 ha
- ▶ 1719 geochemical sampling conducted across 600 ha at scale 1:10000
- ▶ Channel excavation at 420m³
- ▶ Drilling of 400 m



Centerra Gold Mongolia LLC performed geo-exploration and geophysical work image from 2005-2006. / Covering 600ha, Scale 1:10000 a. Exploration mapping work; b. 1719 geochemical sampling, data processing; c. Geophysical magnetic survey map,/

WORKS CONDUCTED IN 2021

- ▶ Exploration mapping work conducted across 5192 ha at scale 1:25000
- ▶ Exploration mapping work conducted across 900 ha at scale 1:5000
- ▶ Archeological and paleontological research across 5192 ha area
- ▶ Geophysical magnetic survey mapping across 600 ha
- ▶ Channel excavation at 600 m³
- ▶ Drilling of 1657 m
- ▶ Laboratory analysis of 134 rock samples
- ▶ Laboratory analysis of 1653 core samples



Nukht exploration site geological-minerals map, Scale 1:25000

ROCK SAMPLES COLLECTED IN 2021



NUT-AR-12 rock sample, Au-3.41 g/t



NUT-CH-22 rock sample, Au-2.90 g/t

WORKS CONDUCTED IN 2021



Nukht exploration site NUTTR-01 channel excavation sampling



Nukht site near Gyalalzakh area quartz veins with 10 g/t gold mineralization

WORKS CONDUCTED IN 2021



NUKTH-01 borehole at 31.50-39.35 m, Au-0.9 g / t grade quartz granite, 2-3% pyrite mineralization, strong quartz-sericitized granodiorite



Nukht exploration site NUKTH-01 borehole, NUTTR-02 excavation channel

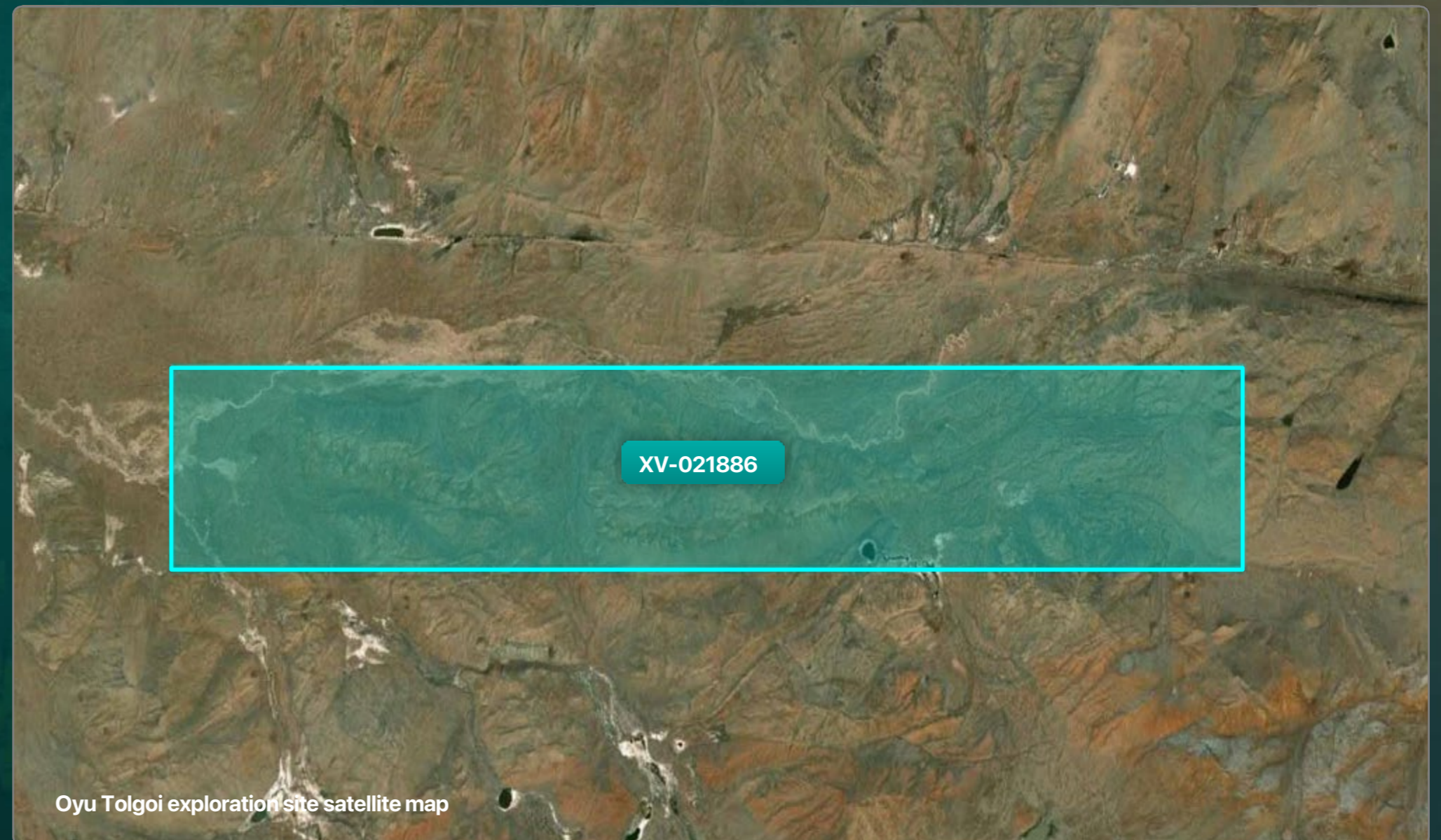
OYU TOLGOI PROJECT

Owner:
Mongolian Copper Prospecting Group

Located 1190 km west of Ulaanbaatar, Oyu Tolgoi (XV-021886) is a 2,436.13-ha exploration area in Bayankhairkhan soum, Zavkhan aimag, is 90 km from the "Arts Suuri" border checkpoint adjacent to Bayan-Tes soum in northwestern Mongolia. Located 25km west to the main road connecting western aimags.

PROJECT INFORMATION

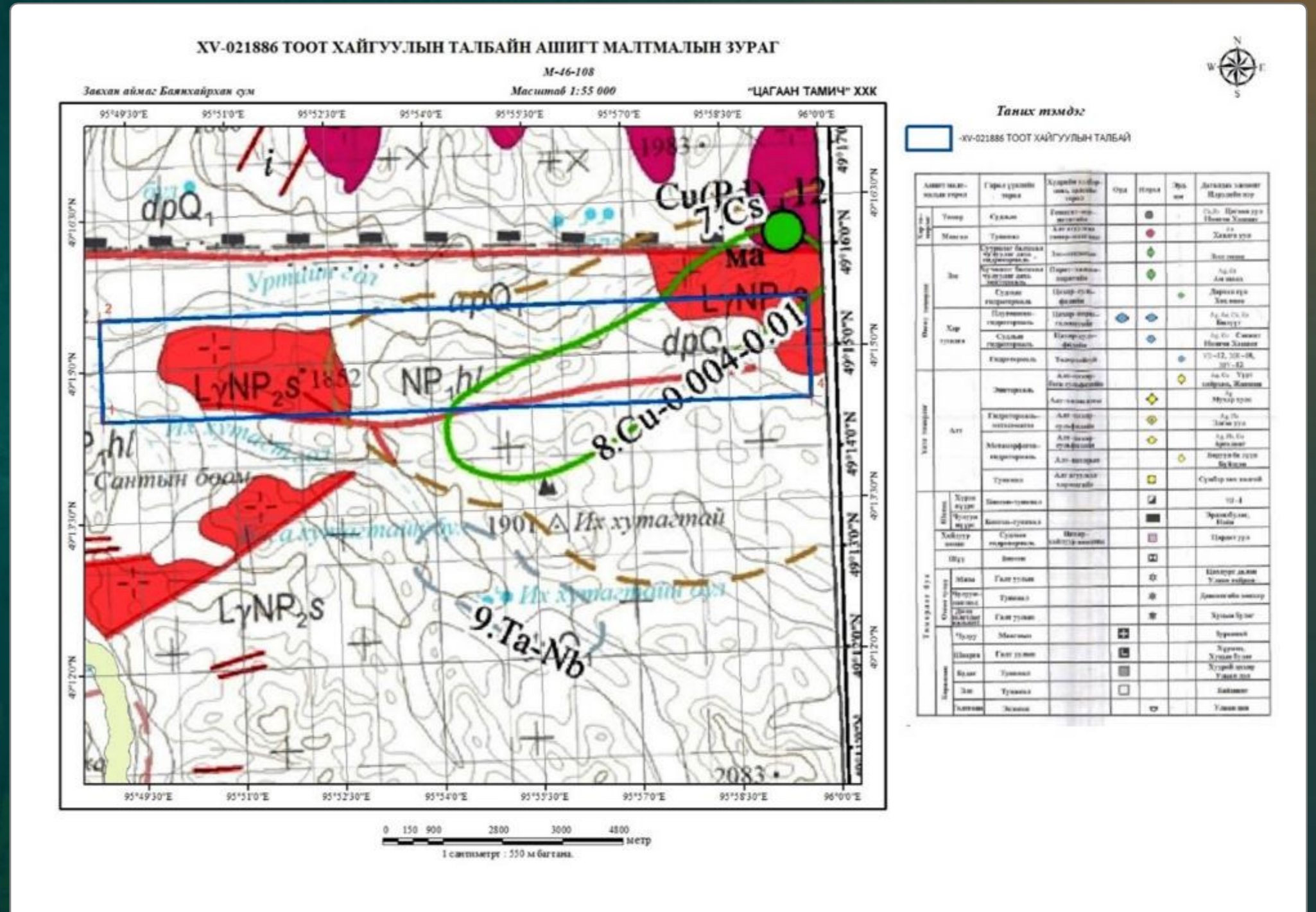
License No.:	XV-021886
Name:	Oyu Tolgoi
Type:	Exploration license
Status:	1 st year
Owner:	Mongolian Copper Prospecting Group
Area /ha/:	2436.13



Oyu Tolgoi exploration site satellite map

WORKS CONDUCTED IN 2021

- ▶ Survey route covered 50 km
- ▶ Collected 20 rock samples from the exploration site



Oyu Tolgoi exploration site geological-minerals map

WORKS CONDUCTED IN 2021



Oyu Tolgoi exploration site west area



Sample #573 taken from the Oyu Tolgoi site northeast region Cu-0.4%

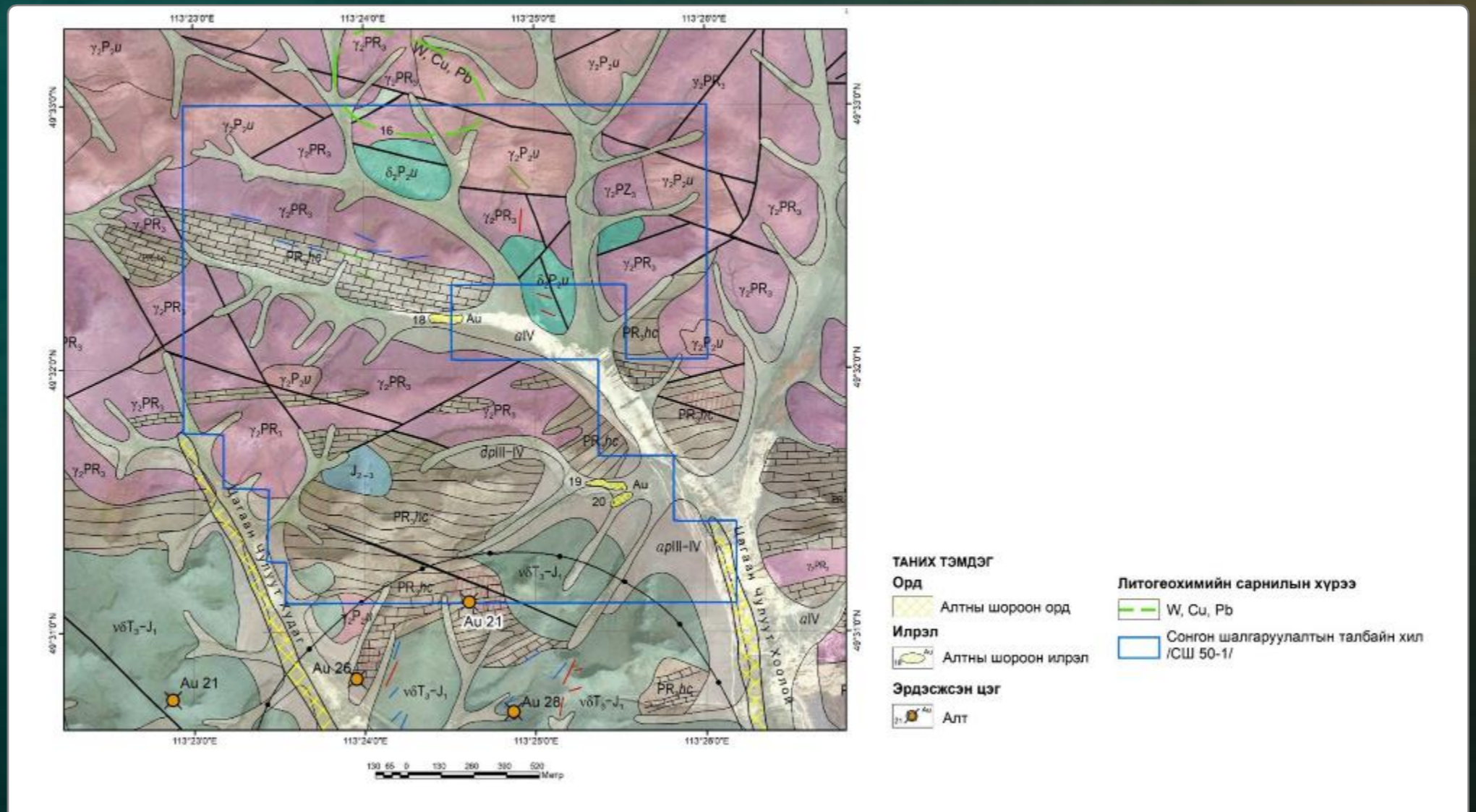
UNDUR UUL PROJECT

Owner:
Related companies

The Undur-Uul (XV-021784) project spans 1119.53 ha, located in Bayandun soum, 700 km from Ulaanbaatar and 180 km from Dornod aimag's center, and is 60 km from the "Ul Khan" border crossing adjacent to Bayan-Uul soum in northeastern Mongolia. Located at Mongol-Ohotsk Suture Zone gold mineralization distribution area. Exploration site placed next to the opening of an alluvial placer gold deposit. Gold mineralization is linked to the Tsagaanchuluut intrusive complex. Tsagaanchuluut intrusive complex is dispersed across exploration site of Undur-Uul. Undur-Uul gold project spans 3km north to the Tsagaanchuluut gold deposit. Tsagaanchuluut deposit reserve was counted 10.8t as of 2013.

PROJECT INFORMATION

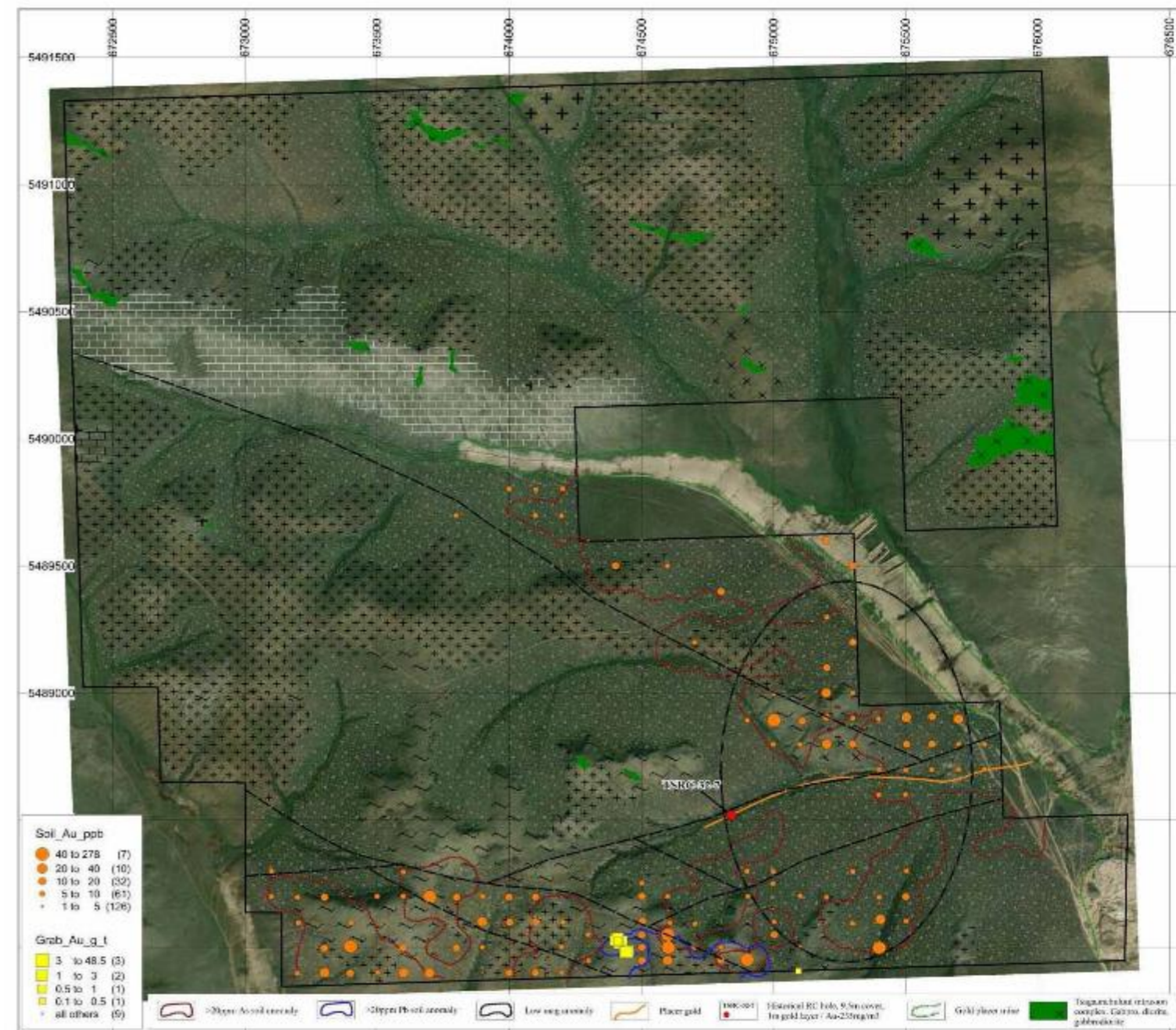
License No.:	XV-021784
Name:	Undur uul
Type:	Exploration license
Status:	1 st year
Owner:	Intercontinental Minerals LLC
Area /ha/:	1119.53



Undur-Uul exploration site minerals map

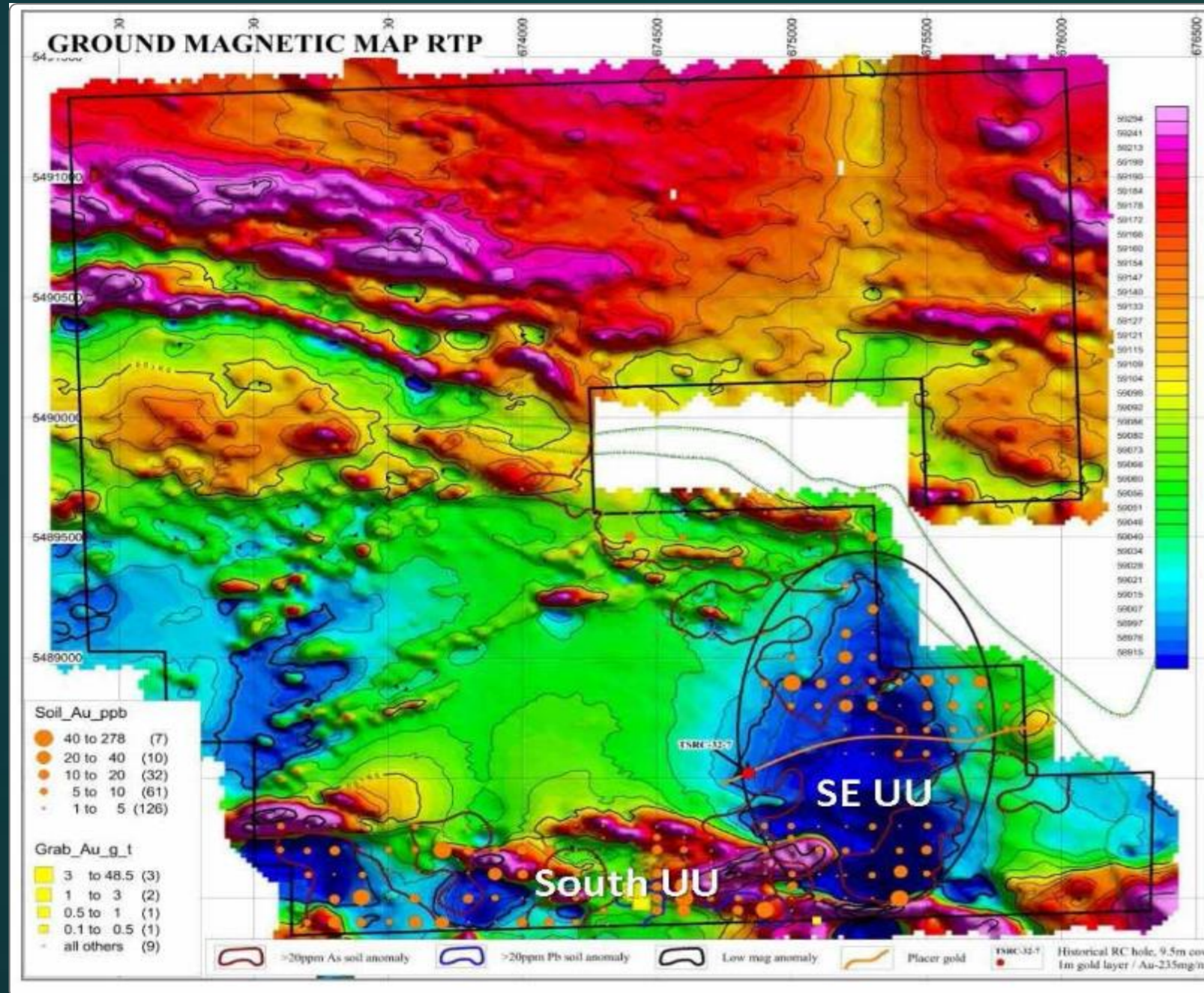
WORKS CONDUCTED IN 2021

- ▶ Exploration mapping across 136 km
- ▶ Collected 23 rock samples
- ▶ Collected 24 geochemical soil samples
- ▶ Magnetic survey conducted across 260 km

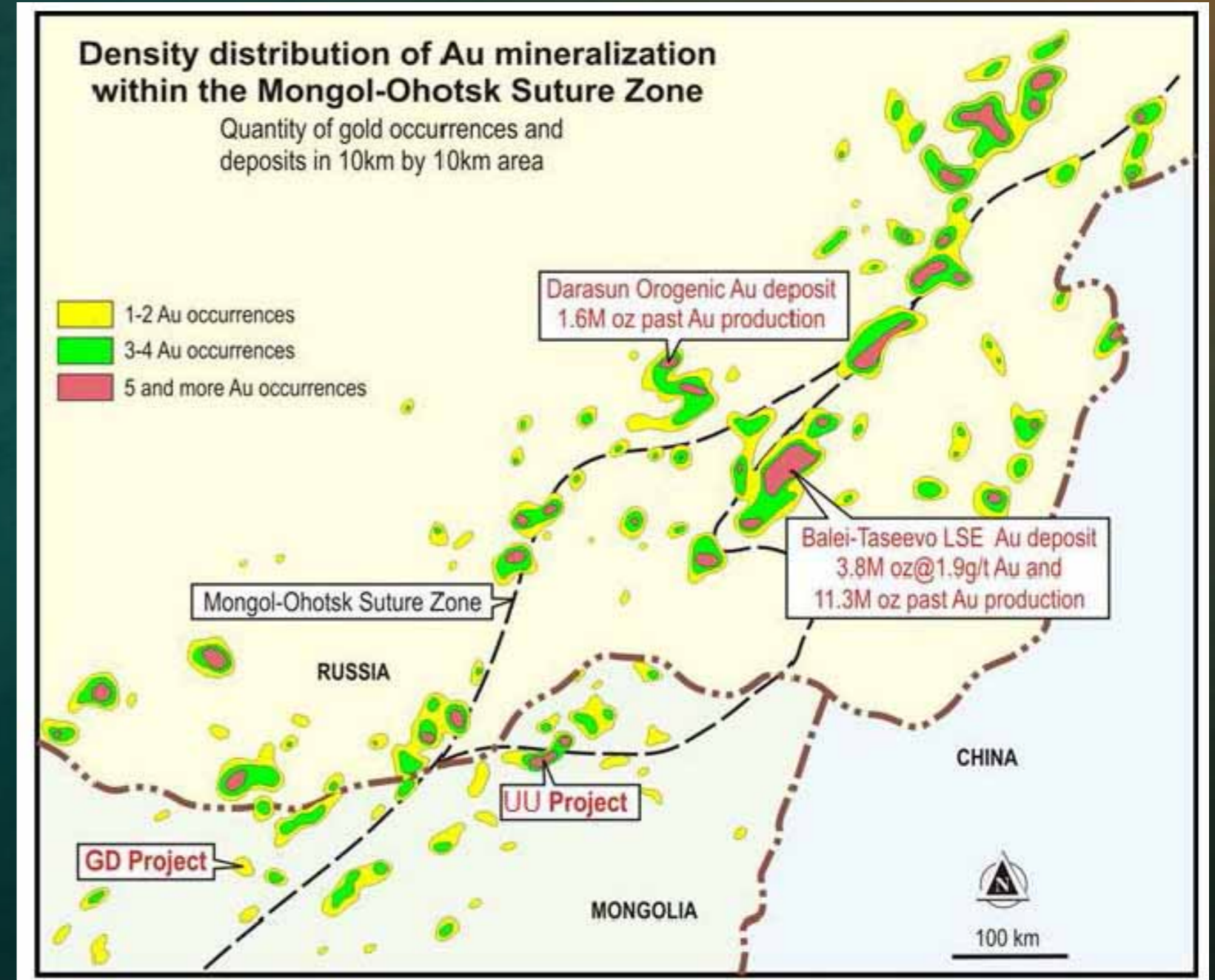


Undur-Uul exploration site's satellite and geological map of arsenic gold soil sample anomaly and rock samples result distribution

WORKS CONDUCTED IN 2021



Arsenic gold soil sample anomaly, rock samples result distribution shown in magnetic field intensity map



Mongol-Ohotsk Suture zone gold mineralization distribution map

WORKS CONDUCTED IN 2021



Undur-Uul exploration site northeast view /Tsagaanchuluut passage placer gold deposit/



Undur-Uul exploration site south site view to Tsagaanchuluut well an alluvial/placer gold deposit.

WORKS CONDUCTED IN 2021



Rock samples collected from south area of the Undur-Uul exploration site.



Oxidized pyrite, galenite, anglesite, malachite and scorodite mineralized quartz-sulfide vein.
Au-0.5-11.2g/t,
Ag-7-677g/t,
(average: Au-4.04g/t,
Ag-182g.t)



Rock samples collected from southeast area of the Undur-Uul exploration site.

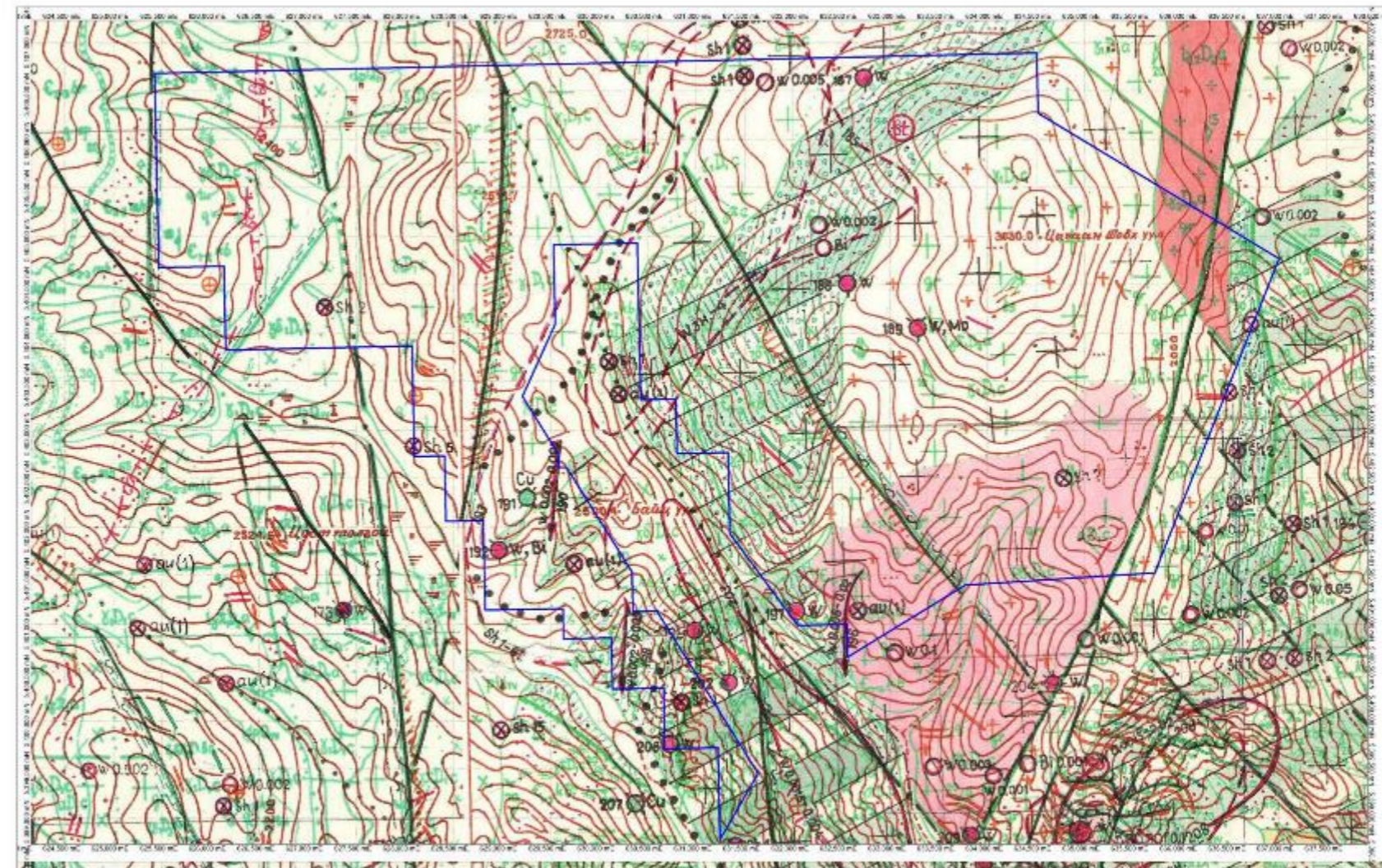
BAYANZURKH PROJECT

Owner:
Related companies

The "Bayanzurkh" (XV-021948) tungsten project spans an area of 4718.45 ha is located in Tsengel soum of Bayan-Ulgii aimag, is at distance of 1350 km west of Ulaanbaatar, 110 km southwest of Bayan-Ulgii aimag center and 35 km southwest of Tsengel soum center. Has advantage of bordering with Khovd River tungsten deposit in the west, 70 km east to Tsengel soum's Tsagaan nuur port, 75 km north to Altai soum's Dayan port.

PROJECT INFORMATION

License No.:	XV-021948
Name:	Bayanzurkh
Type:	Exploration license
Status:	1 st year
Owner:	Zuchi Resources LLC
Area /ha/:	4718.45



Bayanzurkh exploration site geological-mineral map

WORKS CONDUCTED IN 2021

- ▶ Survey route covered 15 km
- ▶ 9 rock samples collected at exploration site



Bayanzurkh exploration site west area

WORKS CONDUCTED IN 2021



Bayanzurkh exploration site southwest area tungsten, Quartz vein with low grade copper mineralization, quartz vein siliceous zone



Sample #580 taken from the Bayanzurkh site west region, W-0.2%



Khovd river tungsten deposit's sample bordering southeast to the Bayanzurkh exploration site

CONTACT



Company address:

Khan-Uul district, 15th khoroо, "Regis Place" 5th floor, #503, Ulaanbaatar, Mongolia

Tel: (+976) 7000-7757

E-mail: info@mcpг.mn

Geologist:

B. Enkh-Amgalan

Tel: (+976) 9509-9284

E-mail: enkh-amgalan@mcpг.mn

